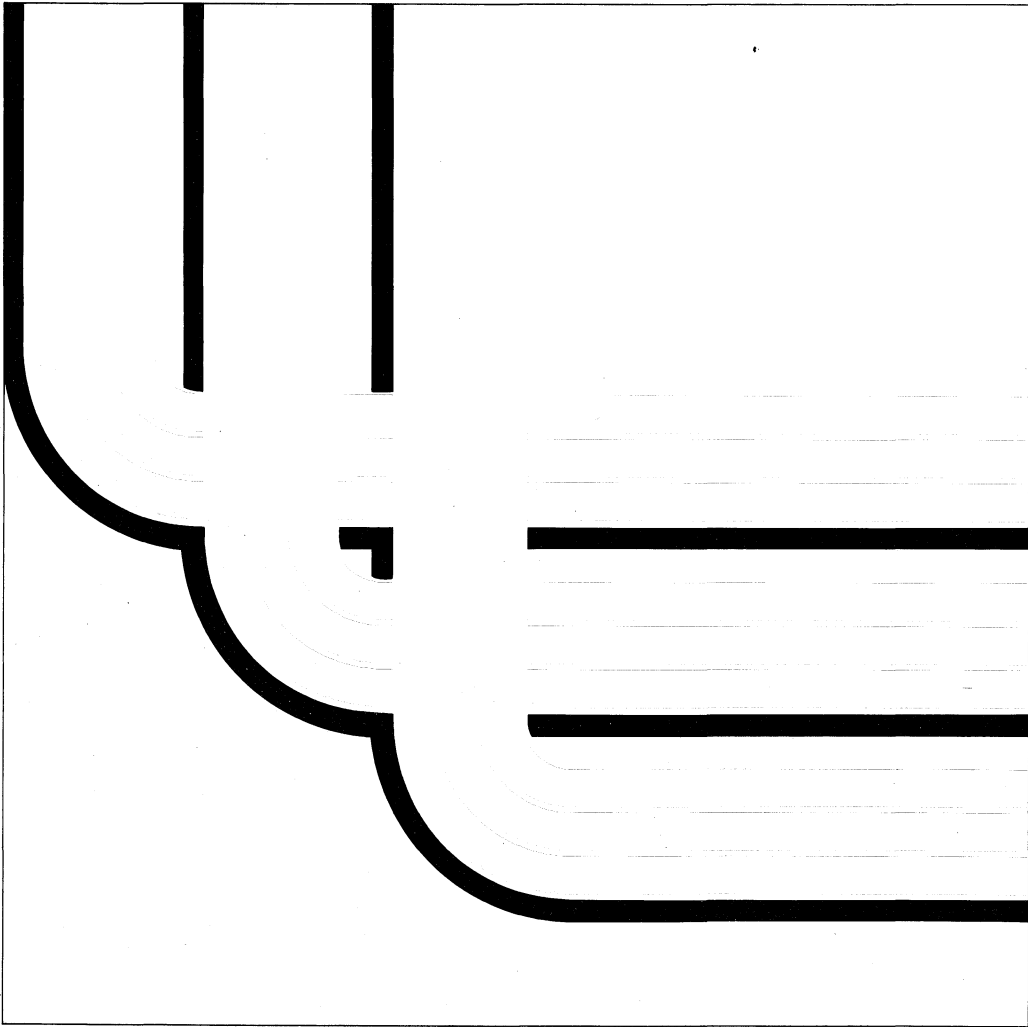


**Central Site
Distribution Guide**

Version 2



Take Note!

Before using this information and the product it supports, be sure to read the general information under "Notices" on page v.

First Edition (April 1991)

This edition applies to the licensed program IBM Operating System/400 (Program 5738-SS1), Version 2 Release 1 Modification 0, and to all subsequent releases and modifications until otherwise indicated in new editions. Make sure you are using the proper edition for the level of the product.

Order publications through your IBM representative or the IBM branch serving your locality. Publications are not stocked at the address given below.

A form for readers' comments is provided at the back of this publication. If the form has been removed, you may address your comments to:

Attn Department 245
IBM Corporation
3605 Highway 52 N
Rochester, MN 55901-7899

When you send information to IBM, you grant IBM a non-exclusive right to use or distribute the information in any way it believes appropriate without incurring any obligation to you or restricting your use of it.

© Copyright International Business Machines Corporation 1991. All rights reserved.

Note to U.S. Government Users — Documentation related to restricted rights — Use, duplication or disclosure is subject to restrictions set forth in GSA ADP Schedule Contract with IBM Corp.

Contents

Notices	v
About This Guide	vii
Chapter 1. Introduction	1-1
Distribution Methods	1-2
Method 1. Create and Install the IBM Licensed Program Distribution Tape at the Central Site System	1-3
Method 2. Copy the IBM Licensed Program Distribution Tape	1-4
Installation Methods	1-4
Method 1. Automatic Installation	1-4
Method 2. Manual Installation	1-5
Total System Package Option or Preloaded System Option	1-6
Release Level Compatibility	1-6
Program Temporary Fix (PTF) Level	1-6
Chapter 2. Planning Licensed Program Distributions	2-1
Preparing Distribution Tapes and Installation Instructions	2-1
Method 1. Create the IBM Licensed Program Distribution Tape at the Central Site System	2-1
Method 2. Copy the IBM Licensed Program Distribution Tape	2-3
Manuals for Target Site System	2-4
Installing a New AS/400 System	2-4
Licensed Internal Code	2-4
OS/400 Licensed Program	2-5
Language Files	2-5
Primary Language	2-5
Secondary Languages	2-5
User Profiles and Device Configuration	2-5
Using User Profiles	2-6
Initial Distribution	2-6
New Release Distribution	2-6
Using Device Configuration	2-6
Initial Distribution	2-6
New Release Installation	2-7
Automatic Configuration	2-7
Libraries	2-7
IBM-Supplied Libraries (QGPL, QUSRSYS)	2-7
Other User Libraries	2-8
Optional OS/400 Items and Other Licensed Programs	2-8
PC Support	2-9
Program Temporary Fixes (PTFs)	2-9
Central Site System Distribution of Fixes	2-9
Rack or System Configuration Data	2-13
Save and Restore Strategy	2-14
Attended Target Site Systems	2-14
Unattended Systems in a Communications Network	2-14
Electronic Customer Support Considerations	2-14
Chapter 3. Installing Applications and Restoring Objects Using a User-Defined Installation Program	3-1

Using the QLPUSER Program	3-1
Verifying the Operation of the QLPUSER Program at the Target Site System	3-2
Chapter 4. Working with Installation Profiles	4-1
Advantages of Using an Installation Profile	4-1
Work with Installation Profiles Display	4-1
Creating an Installation Profile	4-3
Changing an Installation Profile	4-3
Creating and Changing an Installation Profile	4-3
Change Profile Details Display	4-4
Change OS/400 Installing Options Display	4-5
Change Restore Options Display	4-6
Change OS/400 Installing Options Display	4-7
Change Major System Options Display	4-8
Change Licensed Program Options Display	4-10
Displaying an Installation Profile	4-11
Deleting an Installation Profile	4-12
Chapter 5. Preparing and Installing Distribution Tapes	5-1
Things to Do Before You Create a Distribution Tape with LICPGM Menu	
Option 40	5-1
Preparing the Distribution Tape	5-2
Installing the Distribution Tape at the Target Site System	5-5
Optional Tasks for Installing Distribution Tapes	5-6
Restoring User Profiles and Configuration Objects	5-8
Installing Additional Licensed Programs	5-8
Installing Secondary Languages	5-8
Installing User Libraries	5-8
Appendix A. Licensed Program File Names	A-1
Multilingual or Secondary Language Customer Tape	A-10
Appendix B. Central Site Distribution Cover Sheet	B-1
Index	X-1

Notices

References in this publication to IBM products, programs, or services do not imply that IBM intends to make these available in all countries in which IBM operates.

Any reference to an IBM licensed program or other IBM product in this publication is not intended to state or imply that only IBM's program or other product may be used.

IBM may have patents or pending patent applications covering subject matter in this document. The furnishing of this document does not give you any license to these patents. You can send license inquiries, in writing, to the IBM Director of Commercial Relations, IBM Corporation, Purchase, NY 10577.

The following terms, denoted by an asterisk (*) in this publication, are trademarks of the IBM Corporation in the United States and/or other countries:

Application System/400	AS/400	C/400
COBOL/400	FORTRAN/400	IBM
Operating System/400	OS/2	OS/400
RPG/400	SQL/400	Total System Package
TSP	400	

The following terms, denoted by a double asterisk (**) in this publication, are trademarks of other companies as follows:

Century Schoolbook	American Type Foundry
Helvetica	Linotype AG or its subsidiaries
ITC Avant Garde Gothic	International Typeface Corporation
ITC Souvenir	International Typeface Corporation
Monotype Garamond	The Monotype Corporation plc.
Mylar	El du Pont de Nemours & Co., Inc
RM/COBOL-85	Ryan McFarland Corporation

This publication could contain technical inaccuracies or typographical errors.

This publication contains examples of data and reports used in daily business operations. To illustrate them as completely as possible, the examples include the names of individuals, companies, brands, and products. All of these names are fictitious and any similarity to the names and addresses used by an actual business enterprise is entirely coincidental.

About This Guide

This guide contains planning information and information about the options available for doing a licensed program distribution:

- An overview of a typical licensed program distribution
- Planning decisions that affect the content of the licensed program distribution
- How to install applications and restore objects using a user-defined installation program
- Working with an installation profile (an installation profile reduces the number of tasks an operator must perform during the tape installation at the target site system)
- Preparing the distribution tape and installing the distribution tape on the target site system
- File names for licensed program files and all licensed programs
- Cover sheet you can include with your distribution tape

This guide is intended for the central site planner who is responsible for creating and distributing tapes containing licensed programs, program temporary fixes (PTFs), and application programs to other systems.

You should understand the licensing agreement and the objectives of your distribution plan. The objectives of your distribution plan should include the following:

- The licensed programs you want to distribute
- How you want to distribute PTFs and new releases of licensed programs
- How you want to distribute configuration data
- How you want to distribute security data
- How you want to distribute user data for IBM-supplied libraries
- How you want to distribute secondary languages
- How you want to distribute user libraries that contain applications

You may need to refer to other IBM manuals for more specific information about a particular topic. The *Publications Guide*, GC41-9678, provides information on all manuals in the AS/400 library.

Chapter 1. Introduction

IBM provides licensing options for the Application System/400 (AS/400)* licensed programs where the user has the responsibility of distributing the licensed programs and program temporary fixes (PTFs) to other systems.

The distribution of licensed programs is different from the normal distribution of application programs, system control information, and data in a distributed systems network. The main differences are that the distribution media is tape, and that the target site system must be attended while installing licensed programs.

This guide highlights some of the different techniques and considerations needed to develop a plan for distributing licensed programs in a distributed systems network, or distributing licensed programs to other systems that operate more independently. The systems discussed in this guide are called the central site system and the target site system.

- **Central site system.** This system is licensed to receive the distribution tapes from IBM. In a distributed systems network, the central site system is usually defined to be the focal point in a communications network for alerts, application design, and network management tasks.

The central site system can also distribute licensed programs to other systems that operate independently of the central site system but depend on the central site system for distributing licensed programs.

- **Target site system.** This system depends on the central site system for distribution of licensed programs. This system is possibly unattended, and is probably not licensed to receive licensed program tapes from IBM.

A target site system can be part of a distributed systems communications network, or can operate independently of the central site system but rely on the central site for licensed program distributions and application development and maintenance.

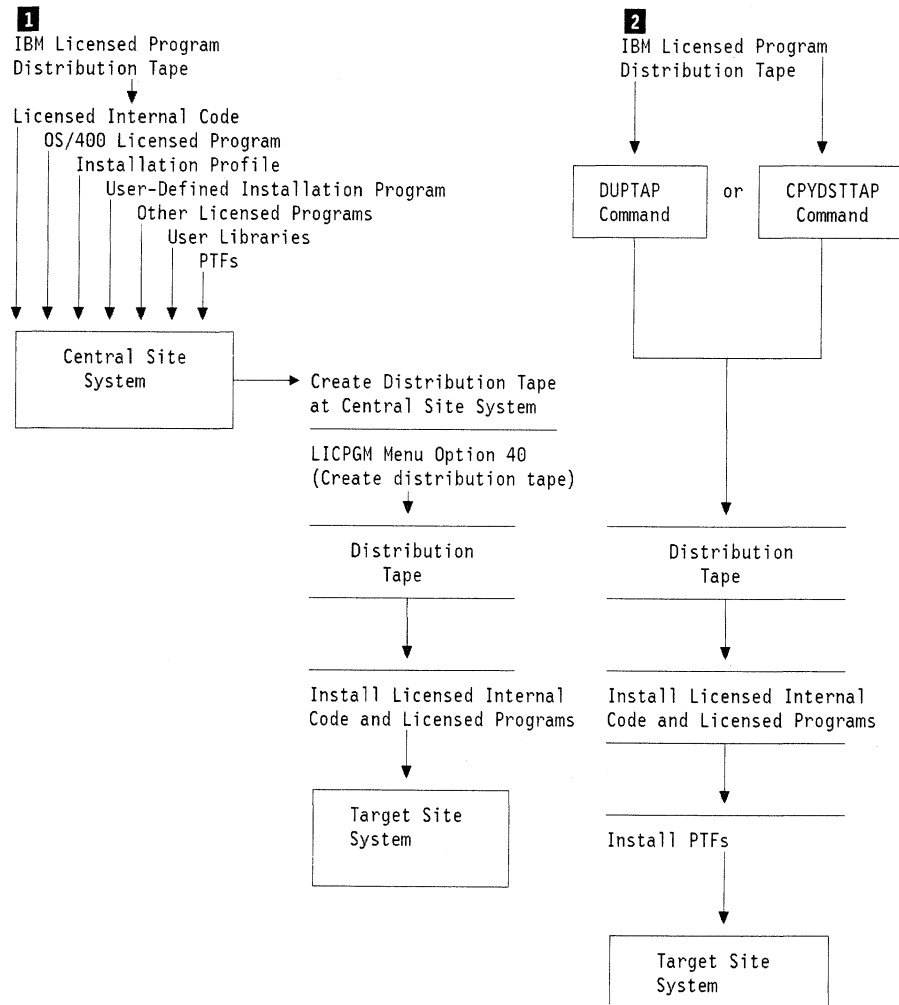
The distribution tasks should occur at the following times:

1. The initial distribution by the central site system
2. The distribution of PTFs between releases
3. The distribution of a new IBM release level of licensed programs

Distribution Methods

There are two basic methods available to the central site system for distributing licensed programs:

- 1** Method 1. Install the IBM-supplied licensed program distribution tape at the central site system. Then select option 40 (Create distribution tape) on the LICPGM menu to create a distribution tape to distribute to target site systems.
- 2** Method 2. Copy the IBM-supplied licensed program distribution tape at the central site system and distribute it to target site systems.



You can use a combination of the above methods to distribute licensed programs from the central site system. For example, you can use option 40 (Create distribution tape) in method 1 to create a tape, and then use the Duplicate Tape (DUPTAP) command or the Copy Distribution Tape (CPYDSTTAP) command in method 2 to make copies for target site systems.

Note: The programming source code is available for the CPYDSTTAP command in the QUSRTOOL library. The code is provided “as is” without warranty of any kind, either expressed or implied, including but not limited to the implied warranties of merchantability and fitness for a particular purpose. IBM does not warrant that the functions contained in the program will meet your requirements or that the operation of the program will be unin-

errupted or error free. The entire risk as to the quality and performance of the program is your responsibility.

Method 1. Create and Install the IBM Licensed Program Distribution Tape at the Central Site System

Use option 40 (Create distribution tape) from the licensed program menu to help create a distribution tape. The tape can then be distributed and installed on other systems. You can also distribute user libraries that contain applications on other tapes. However, the central site system must provide the target site systems with instructions on how to install the user libraries and licensed programs.

One advantage to this method is program temporary fix (PTF) management. Using this method, you can apply PTFs at the central site system before distributing the licensed programs. The licensed programs with applied PTFs will be distributed when you create your distribution tape.

Another advantage to this method is an installation profile. The target site system can use the automatic installation method by using an installation profile. The automatic installation method reduces the number of tasks the operator must perform during the installation at the target site system. Chapter 4, "Working with Installation Profiles" contains information about installation profiles.

The central site system should have adequate resources, such as auxiliary storage, to handle all licensed programs needed at the target site systems. This is also true for applications developed at the central site system for target site systems.

Another resource consideration is a common tape exchange media such as a 1/2-inch tape or cartridge.

The following table shows the allowed combinations of systems that can use Method 1 (Create and Install the IBM Licensed Program Distribution Tape at the Central Site System) to install the IBM Licensed Programs at a target site system.

Figure 1-1. Create and Install Distribution Tape

Central Site	Target Site	Allowed
9406	9406	Yes
9406	9404	Yes
9406	AS/400 9402	Yes
9404	9406	No
9404	9404	Yes
9404	AS/400 9402	Yes
AS/400 9402	9406	No
AS/400 9402	9404	Yes
AS/400 9402	AS/400 9402	Yes

Target site system resources (for example, auxiliary storage) must be sufficient to receive distributions (licensed programs and applications) from the central site system. For more information about resources required for licensed program distributions, see the *Licensed Programs and New Release Installation Guide*, SC41-9878.

Method 2. Copy the IBM Licensed Program Distribution Tape

This method allows you to copy the IBM licensed program distribution tape without installing it on the central site system. There are two commands available for copying tapes:

- DUPTAP. This command duplicates everything on the IBM licensed program distribution tape.
- CPYDSTTAP. This command is available in the QUSRTOOL library and allows you to select licensed programs you want to distribute.

How to use these commands is described in Chapter 2, “Planning Licensed Program Distributions” of this guide.

Other resource considerations include:

- A common tape exchange unit such as a 1/2-inch tape or cartridge
 - Two tape units at the central site system to duplicate or copy tapes
- Note:** There are no restrictions between 9402, 9404, and 9406 combinations of central and target site systems for this method.

Target site system resources (for example, auxiliary storage) must be sufficient to receive distributions (licensed programs and applications) from the central site system.

Installation Methods

There are two basic methods available for installing the distribution tapes at the target site system:

Method 1. Automatic Installation

Automatic installation means that the operator at the target site system simply loads distribution tapes as prompted. The following operator tasks are eliminated when you use automatic installation:

- Select function to restore licensed internal code
- Select option to install the operating system
- Confirm the installation of the operating system
- Select a language feature
- Confirm a language feature
- Select installation options
- Select IPL options
- Work with Licensed Programs menu

When an automatic installation is performed at the target site system, the values that control the installation are read from an installation profile that is on the distribution tape. The primary language on the distribution tape will be the language that is loaded during an automatic installation of the operating system.

Using an installation profile to install tapes containing licensed programs, program temporary fixes (PTFs), and application programs has the following advantages:

- Operator interaction during the installation is reduced to mounting tapes as prompted.

- Allows the central site planner to create customized installation profiles to control the installation at the target site system.
- Provides the capability to restart after a failure, including ways to bypass parts of the installation that were successful.
- Reduces or eliminates messages during the installation.
- Allows the central site planner to install applications or further customize the system after a successful installation using a user-defined installation program.

Automatic installation can be used to install distribution tapes that were created by using either of the two methods previously described.

If Distribution Method 1 (Install the IBM Licensed Program Distribution Tape at the Central Site System) is used, then you must create an installation profile. Chapter 4, "Working with Installation Profiles" contains information about installation profiles.

If Distribution Method 2 (Copy the IBM Licensed Program Distribution Tape) is used, then the target site system will be using an IBM-supplied installation profile that is already on the tape. The IBM-supplied installation profile installs everything in the following list without user interaction required:

- Licensed internal code
- Operating System/400
- Licensed programs and optional parts of licensed programs that are already installed at the target site system

After the installation is complete, the PTF cumulative package should be installed using the PTF Shipping Information Letter.

Note: Automatic installation also keeps the current environment (AS/400 system or System/36), system values, and configuration values. For more information about installing your new release using automatic installation, see "Replacing a Release Using Automatic Installation" in the *Licensed Programs and New Release Installation Guide*, SC41-9878.

Method 2. Manual Installation

When manual installation is used, the operator at the target site system must perform several tasks to install the system with the distribution tapes. Displays are presented that allow the operator to customize the installation. The manual process allows you to change the environment (AS/400 system or System/36), system values, language feature code, and configuration values during the installation process. Using the manual process requires more user interaction during the installation process.

Use the manual installation process if you are doing any of the installation procedures in the following list:

- Adding DASD
- Installing additional licensed programs that are not on the distribution tape

For more information about installing your new release using manual installation, see the section on replacing a release using manual installation in the *Licensed Programs and New Release Installation Guide*, SC41-9878.

Total System Package Option or Preloaded System Option

IBM provides the Total System Package (TSP)* option or the preloaded system option for ordering a system that is delivered with the licensed programs installed and specified hardware configured.

Total System Package systems and preloaded systems are licensed to receive their own IBM distribution tapes and PTFs, so that licensed program distribution need not be a part of central site system activity.

Distributing applications and system control information can be done through communications in a distributed systems network or by distribution to independent systems.

Release Level Compatibility

It is the responsibility of the central site to ensure that the licensed program release levels of the central site system and target site systems are compatible. This is especially important if objects and data are to be interchanged between systems. Saved objects and individual licensed programs should not be restored on a system that is not at the same level. However, most objects, including physical files and programs saved on a current release level, can be restored on a system that is one full release behind. See the information about current release to previous release support in the *Backup and Recovery Guide*, SC41-8079.

The release level of licensed programs can be determined by typing GO LICPGM and selecting option 10 (Displays licensed programs status and release level).

Program Temporary Fix (PTF) Level

IBM periodically makes PTFs available to update licensed program code between releases. Depending on the licensing option you are using, PTFs are available to the central site system or to target site systems in two ways:

- Corrective service
 - On a tape accompanied by a cover letter describing the contents of the tape
 - From the service support system by way of electronic customer support
- Preventative service
 - Cumulative PTF tape

It is the responsibility of the central site system to control the PTF level of the target site systems. See Chapter 2, “Planning Licensed Program Distributions” for more information about PTFs.

Chapter 2. Planning Licensed Program Distributions

The following topics contain information to help you plan the kind of distribution you want. See Chapter 5, "Preparing and Installing Distribution Tapes" for a description of how to do the distribution tasks.

Preparing Distribution Tapes and Installation Instructions

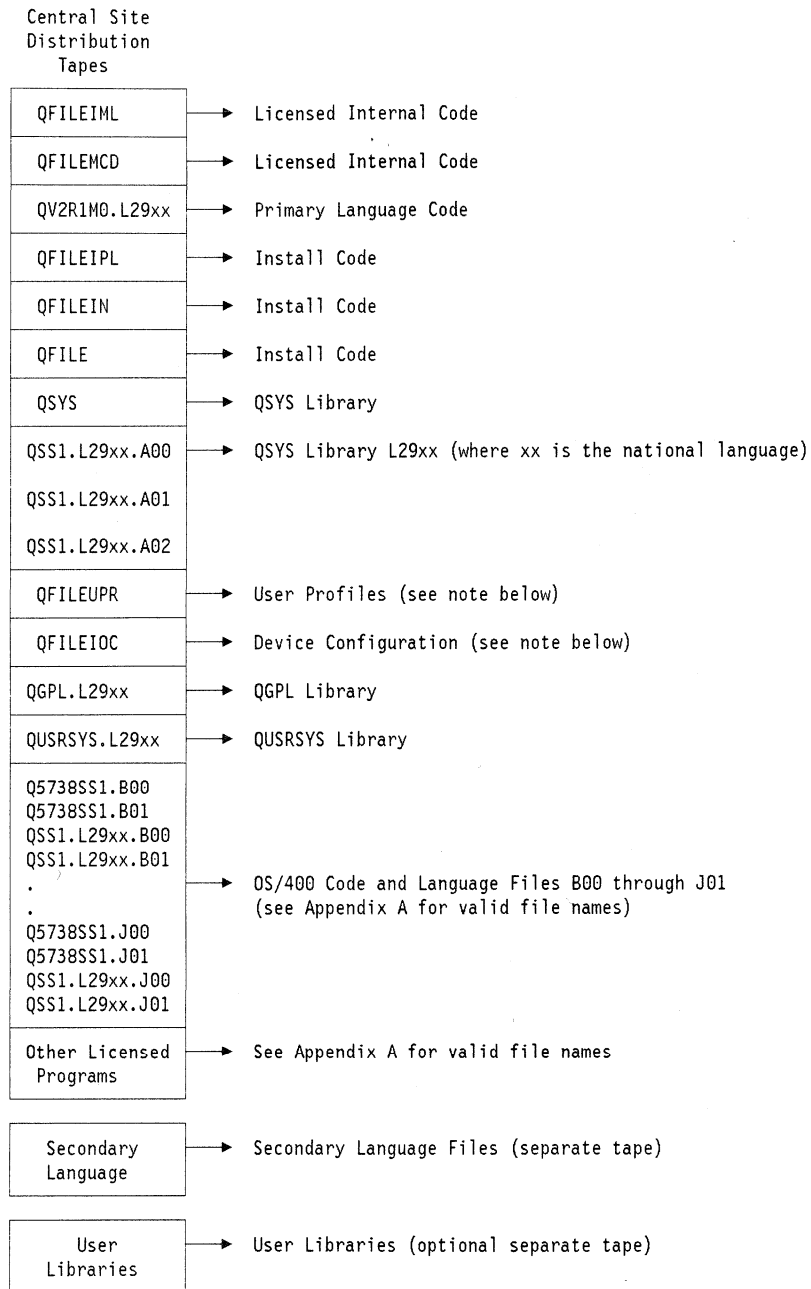
Method 1. Create the IBM Licensed Program Distribution Tape at the Central Site System

The LICPGM menu on the AS/400 system has an option you can use to create a distribution tape at the central site system to distribute licensed programs to target site systems. Using the licensed program menus, you can select which installation profile to use and which licensed programs and OS/400 optional programs to put on your distribution tape.

Note: If you select a base licensed program, it is recommended you also select the optional licensed programs for the base licensed program. This ensures the PTF index on the target site system is updated correctly. After installation is complete at the target site system, use the Delete Licensed Program (DLTLICPGM) command to delete the optional licensed programs that are not needed.

You can also put user libraries and applications on separate tapes to distribute to target site systems. User libraries can be installed at the target site system with directions from the central site system. See Chapter 3, "Installing Applications and Restoring Objects Using a User-Defined Installation Program" for more information.

When you choose option 40 (Create distribution tape) on the LICPGM menu and complete the instructions on the displays that follow, you create a set of tapes that look like the arrangement of information in the following chart.



Note: The User Profiles (QFILEUPR) file and the Device Configuration (QFILEIOC) file will not appear on the list of file names supplied by IBM; however, these files will appear on the distribution tape you create using option 40 (Create distribution tape).

After the tape is created, you can display the distribution tape using the Display Tape (DSPTAP) command to verify your distribution tape contents. You should include a listing from the DSPTAP command with the distribution tapes you send to the target site system. The listing can be used at the target site system to locate a specific licensed program on the tapes. Appendix A, "Licensed Program File Names" contains a list of file names that can be on your distribution tape, depending on the licensed programs you want to distribute.

To do an installation at the target site system, use the normal installation procedures (automatic or manual) for installing the licensed internal code, the OS/400 licensed program, and other licensed programs. See the *Licensed Programs and New Release Installation Guide*, SC41-9878, for information about installing licensed internal code and licensed programs.

You should prepare instructions for the target site system to install your distribution tape. See Chapter 5, "Preparing and Installing Distribution Tapes" for instructions. Following the installation of the licensed programs, you should include instructions for restoring user libraries if you have included them on your distribution tape. If you use the automatic installation method, you can install user libraries using the QLPUSER program in the QGPL library. See Chapter 3, "Installing Applications and Restoring Objects Using a User-Defined Installation Program" for instructions on how to create a program that performs installation tasks and sends the appropriate instructions to the target site system operator.

Method 2. Copy the IBM Licensed Program Distribution Tape

Another option available for preparing distribution tapes is the Duplicate Tape (DUPTAP) command or the Copy Distribution Tape (CPYDSTTAP) command. These commands can be used to copy the IBM licensed program distribution tape before or after it is installed on the central site system. These commands are described later in this chapter.

If you use the DUPTAP or CPYDSTTAP command to make distribution tapes, make sure that PTFs and the instructions to install them on target site systems are included with the tapes. For more information about PTF handling, see the *System Operator's Guide*, SC41-8082.

Note: The programming source code is available for the CPYDSTTAP command in the QUSRTOOL Library. The code is provided "as is" without warranty of any kind, either expressed or implied, including but not limited to the implied warranties of merchantability and fitness for a particular purpose. IBM does not warrant that the functions contained in the program will meet your requirements or that the operation of the program will be uninterrupted or error free. The entire risk as to the quality and performance of the program is your responsibility.

If you have two tape units, you can duplicate the distribution tapes or PTF tapes by using the Duplicate Tape (DUPTAP) command or the Copy Distribution Tape (CPYDSTTAP) command. The DUPTAP and the CPYDSTTAP commands allow you to copy between different tape device types. The CPYDSTTAP command allows you to selectively copy files from distribution tapes. The CPYDSTTAP command is in the OS/400 example tools library named QUSRTOOL. If you are not familiar with this library, you can begin reading the online documentation by typing the command:

```
STRSEU SRCFILE(QUSRTOOL/QATTINFO) SRCMBR(AAAMAP)
```

This will direct you to the CPYDSTTAP command.

Manuals for Target Site System

You should review your licensing option agreement to determine which IBM manuals come with your licensing agreement and which manuals you have to order separately. The requirements for the target site systems vary with the type of environment they operate in.

A minimum selection of manuals for target site systems should include:

- The appropriate copy of *Attaching Work Station and Communications Cables* for your system:
 - 9406 *Attaching Workstation and Communications Cables*, SA41-9957
 - 9404 *Attaching Workstation and Communications Cables*, SA41-0004
 - AS/400* 9402 *Attaching Workstation and Communications Cables*, SA41-0005
- *Device Configuration Guide*, SC41-8106
- *Licensed Programs and New Release Installation Guide*, SC41-9878
- *Backup and Recovery Guide*, SC41-8079
- *Security Concepts and Planning*, SC41-8083
- *Automatic Installation Guide*, SX41-9072
- *System Operator's Guide*, SC41-8082

These manuals and a copy of the sample central site distribution cover sheet in Appendix B, "Central Site Distribution Cover Sheet" should be sufficient for basic distribution.

Installing a New AS/400 System

The first installation of a new AS/400 system at the central site system or target site system involves the service representative setting up and testing the hardware. When the service representative turns the system over to you, the electronic customer support is configured and tested, and a copy of the rack/system configuration list is filed in the *Operator's Guide*.

Licensed Internal Code

For a new release of licensed programs, the licensed internal code included on the IBM distribution tape contains the most recent changes. The new version will be included on the central site system distribution tape when you use option 40 (Create distribution tape) at the central site system. The new version of licensed internal code should be installed on all target site systems to keep them at the same release level. You can provide instructions to the target site systems or use the instructions on replacing the licensed internal code in the *Licensed Programs and New Release Installation Guide*, SC41-9878.

OS/400 Licensed Program

Depending on your licensing option, the OS/400 licensed program may or may not be installed on all target site systems for the first distribution of licensed programs. The installation procedures described in the *Licensed Programs and New Release Installation Guide*, SC41-9878, can be used to install the licensed programs at the target site system.

Language Files

The IBM licensed program distribution tape contains the primary language files. The distribution tape you create at the central site system copies the primary language files so you can install them at your target site systems.

Primary Language

When the distribution tapes are installed at the target site system, the primary language at the target site system will be the same primary language installed at the central site system. The primary language is the language installed on the system as the default language used to display and print information.

Secondary Languages

If you are distributing secondary languages to target site systems, you must either duplicate the secondary language tape received from IBM using the Duplicate Tape (DUPTAP) command or install the secondary language on the central site system, then use the Save Library (SAVLIB) command to save to tape and use the Restore Library (RSTLIB) command to restore the secondary language on the target site system.

Notes:

1. If a double-byte character set (DBCS) secondary language is being distributed to the target site system, a DBCS primary language must be installed on the target site system.
2. If the central site system has a single-byte character set (SBCS) primary language, the only way to distribute a DBCS secondary language to the target site system is by using the Duplicate Tape (DUPTAP) command.

User Profiles and Device Configuration

Considerations for distributing user profiles and configuration data to the target site systems are explained in the following paragraphs.

If you want to distribute user profiles and configuration data automatically at the target site system using a user-defined installation program, see Chapter 3, "Installing Applications and Restoring Objects Using a User-Defined Installation Program."

Note: When you create distribution tapes using option 40 (Create distribution tape) and install the distribution tapes using the *Licensed Programs and New Release Installation Guide*, SC41-9878, the user data and configuration data are not overlaid at the target site system.

Using User Profiles

Initial Distribution

On the initial distribution, you can either:

- Use the IBM-supplied user profiles and security objects created when the central site system distribution tape is installed at the target site system. You can change the security information for target site systems later by:
 - Using a distributed systems network
 - Using instructions prepared by the central site system
 - Distributing the tailored security information, or
- If you plan to use option 40 (Create distribution tape) on the LICPGM menu to create the tape at the central site system, use the Restore User Profile (RSTUSRPRF) command at the target site system to copy the security used at the central site system.

See *Security Concepts and Planning*, SC41-8083, for information on IBM-supplied security.

New Release Distribution

If you have user profiles and security set up and installed on your target site systems, you probably would not want to restore user profiles and security again.

For a new release installation, the target site system user profiles will remain intact using the installation process.

Using Device Configuration

Initial Distribution

To configure devices for target site systems, the central site system must know the resource names assigned to the devices at each target site system. To get target site system resource names and do the device configuration, one of the following methods can be used:

- Use automatic configuration to configure the devices at the target site system.
- Obtain the resource names for devices from the target site systems when they are installed. A printed copy of the rack/system configuration printout with resource names is available when the service representative installs the target site system. The central site system can now do the device configuration and send the configuration to the target site system or include it in a user library stacked on the distribution tape.
- Create a pass-through environment in a user library on the distribution tape. Instructions for creating a pass-through environment are explained in *Communications and Systems Management Guide (Alerts and Distributed Systems Node Executive)*, SC41-9661.

After the distribution is installed at the target site system, do a remote sign-on, using the pass-through environment, and view the rack/system configuration data for the target site system. Construct the device configuration for the target site system and use a command language (CL) program to create the device descriptions at the target site system.

You could also use this pass-through environment to change other configuration management elements such as:

- System values
- Network attributes
- User profiles
- Local and remote configuration lists

You can use the electronic customer support communications line (always LIN011) for your pass-through environment.

New Release Installation

If device configuration has been done at the target site systems, you probably will not want to restore configuration again.

Automatic Configuration

Target site systems could be installed and have local devices and controllers configured at the time of an initial program load (IPL) by using the automatic configuration option on the Set Major System Options menu. This option creates device descriptions using standard device names, device names based on resource names, or System/36 names for the following:

- Local work station controllers
- Devices
- Tape units
- Diskette units
- Twinaxial or token-ring attached personal computers

Note: You can specify the device descriptions naming convention as part of an installation profile. See Chapter 4, "Working with Installation Profiles" for information about installation profiles.

However, the central site system must be aware of this configuration if the central site system distributes application programs used by different systems.

Note: Remote communications are not configured using this option.

Libraries

IBM-Supplied Libraries (QGPL, QUSRSYS)

Option 40 (Create distribution tape) on the LICPGM menu guides you to the *Save library* prompt that allows you to save the QGPL and QUSRSYS libraries on your central site system distribution tape. These libraries are automatically installed at the target site system during licensed program installation.

When the distribution tape is installed at the target site system, any objects from the central site system that are also on the target site system are installed. If any of these objects contain target site system user information, the installation program attempts to save the user information temporarily, then restores it to the object automatically.

Note: Do not put objects into the QGPL and QUSRSYS libraries on the central site system that you do not want to distribute to the target site system (for example, PTF save files).

Another consideration (not required) is to use the Display PTF (DSPPTF) command to determine if there is any PTF information that does not apply to the target site system. If there is PTF information that does not apply to the target site system, delete the following files from the QUSRSYS library on the target site system:

- QAPZPTF
- QAPZPTF2
- QAPZREQ
- QAPZREQ2
- QAPZSYM
- QAPZSYM2

If you want to delete PTF cover information at the target site system, use the Remove Member (RMVM) command or delete the file named QAPZCOVER in the QGPL library.

Other User Libraries

The user libraries that you may want to include on your distribution tape depend on the design and objectives of your distributed systems network.

There are two basic ways to distribute user libraries:

- Save user libraries on the distribution tape and restore the distribution tape on the target site systems. This way may be acceptable when the target site systems are similar in configuration and are performing similar tasks.
- Save the user libraries on the distribution tapes along with a user library that contains a pass-through environment. Install the distribution tape at the target site systems and then use the pass-through environment to make any necessary changes. This way has more flexibility for target site systems where the configuration and target site system tasks may vary.

Note: You can use a user-defined installation program to restore user libraries when using automatic installation. See Chapter 3, "Installing Applications and Restoring Objects Using a User-Defined Installation Program" for instructions on how to create a program that performs installation tasks and sends the appropriate instructions to the target site system operator.

Optional OS/400 Items and Other Licensed Programs

Option 40 (Create distribution tape) on the LICPGM menu guides you to the save menus and allows you to save selected licensed programs on your distribution tape. This allows the central site planner to decide which licensed programs and optional OS/400 items to include on the distribution tape. You must select the OS/400 Extended Base and OS/400 Online information licensed programs.

The target site system can then install all licensed programs on the tapes using the LICPGM Menu.

Note: If you select an optional item for a licensed program, you must also select the base licensed program for that item. For example, if you select 5728RG1 RPG/400 - System/36-Compatible RPG II, you must also select 5728RG1 RPG/400 - Base Support.

PC Support

The PC part of the PC Support/400 licensed program is distributed on diskette and must be installed on each personal computer for the first installation. You can copy PC Support diskettes as needed to complete your licensed program distribution.

See the *PC Support/400: DOS Installation and Administration Guide*, SC41-0006, and the *PC Support/400: OS/2 Installation and Administration Guide*, SC41-0007, for more information about installing PC Support.

Program Temporary Fixes (PTFs)

IBM periodically makes PTFs and licensed internal code fixes available to update licensed program code. Depending on the licensing option you are working with, the PTFs are made available to either the central site system or the target site system by way of a tape or electronic customer support.

For detailed information about working with PTFs and licensed internal code fixes, see the information entitled "Working with Program Temporary Fixes (PTFs)" contained in the *System Operator's Guide*, SC41-8082. The information pertaining to central site system management and the distribution of PTFs is intended to supplement the *System Operator's Guide*, SC41-8082.

Central Site System Distribution of Fixes

The central site system planner should coordinate the PTF levels of the central site system and the target site system. This ensures that all systems are at the same level. Also, the central site system planner should verify correct system operation before the PTFs are distributed to target site systems. To coordinate the PTF level of the target site systems, one of the following methods can be used:

- Apply PTFs at the central site system. A distribution tape, created at the central site system using the LICPGM option 40 (Create distribution tape) and installed at the target site system, replaces licensed internal code Copy A and Copy B and installs licensed programs at the central site system PTF level. This method can be used for first installation, new release installation, or distribution of cumulative packages. The advantages of this approach are:
 - No special PTF installation instructions are needed at the target site system.
 - The target site system will be at the same PTF and release levels as the central site system.

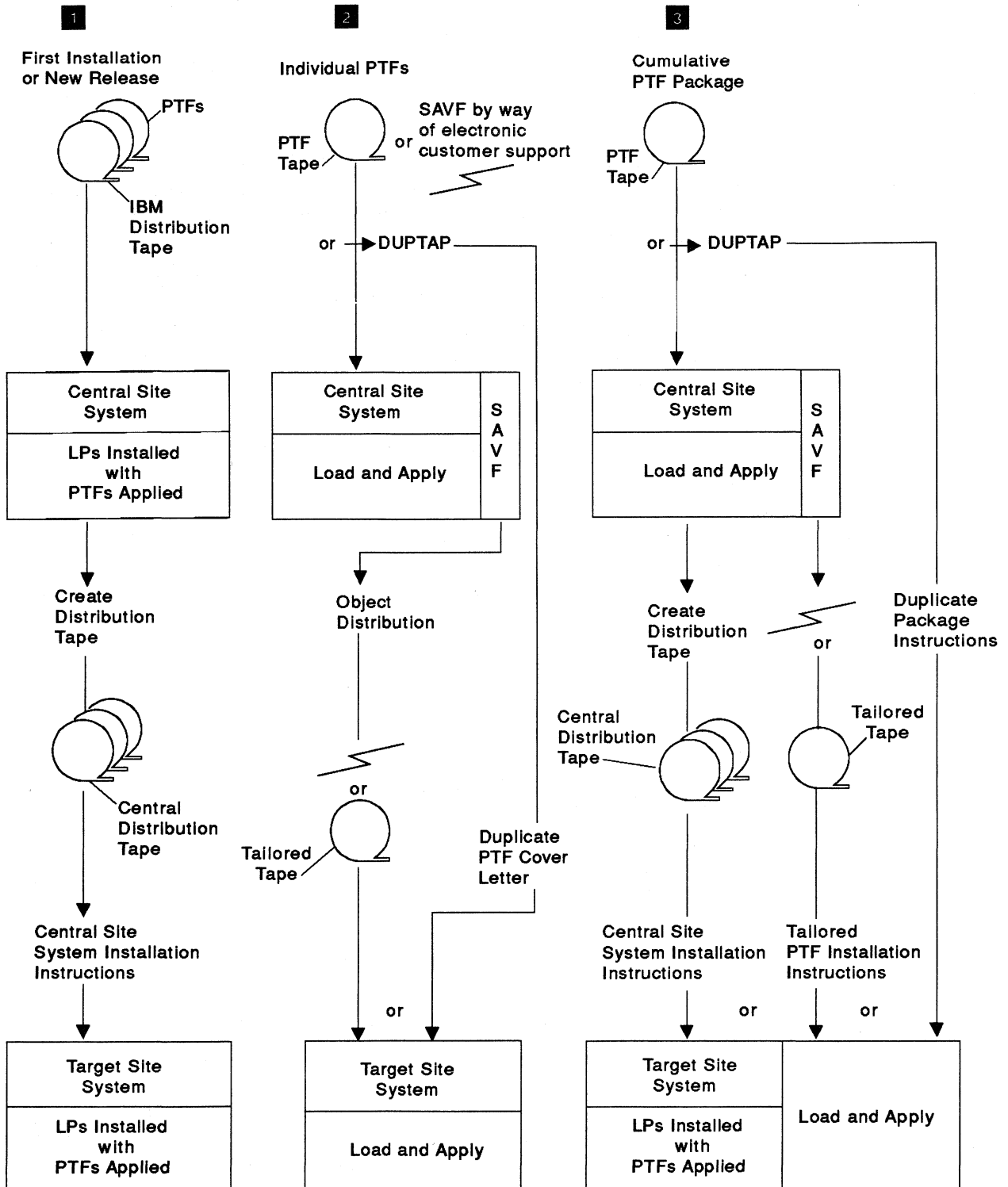
Notes:

1. Automatic installation recovery may not install all products if you are only distributing cumulative PTFs. If automatic installation fails, use manual installation to recover.
2. If you are distributing tapes to multiple target site systems, and one of the target site systems only has the operating system installed, it is recommended you use Install option 1, (Installed products), on the Change Licensed Program Options display when creating your installation profile for the automatic installation method. See Chapter 4,

"Working with Installation Profiles" for information about installation profiles.

- Distribute PTFs to target site systems. If the central site system distributes individual or cumulative PTFs to target site systems, the central site system must provide instructions on installing the PTFs and keep a record of the target site system PTF level.

The different methods of distributing PTFs to target site systems are shown in the illustration on the next page.



RV20628-0

The numbers at the beginning of the following paragraphs correspond to the reverse image numbers on the previous illustration.

- 1** First installation or new release installation of licensed programs and PTFs at the central site system using the *Licensed Programs and New Release Installation Guide*, SC41-9878.

The PTF cumulative package is shipped with the IBM distribution tapes as a separate tape. You should load and apply these PTFs, using the PTF Shipping Information Letter, before you create your distribution tape. This ensures you distribute the latest level of the licensed programs and that all target site systems are at the same level. If PTFs are applied at the central site system, the target site system does not have to apply PTFs.

PTF considerations for a new release installation at the central site system is the same as first installation. The central site system should apply the PTFs that come with the release so the latest PTF level is on the central site system distribution tape.

- 2** Individual PTFs ordered and received at the central site system.

Individual PTFs may be installed between releases, either at the central site system or target site systems. To control the PTF level of target site systems, you should use the Display PTF (DSPPTF) command to ensure the central site system is aware of the PTF level of target site systems.

Individual PTF SAVF can be distributed to the target site system using the Send Net File (SNDNETF) command, or by copying to tape using the Copy PTF (CPYPTF) command.

- 3** Cumulative PTF packages ordered and received from IBM for central site system.

Instructions for installing PTF cumulative packages at the central site system are included with the cumulative PTF package. To distribute a cumulative package to target site systems:

- Use the Duplicate Tape (DUPTAP) command to duplicate the package tape and the printed instructions and to send them to the target site system locations for attended installing.
- Tailor the tape to include only the selected items you want to distribute. How to tailor a PTF tape is discussed in the *System Operator's Guide*, SC41-8082.

The tailored PTF tape can be distributed to target site systems by sending the tape to the target locations or by distributing them through your distributed system network as save files.

- Load and apply the package at the central site system and then use option 40 (Create distribution tape) on the LICPGM menu to distribute the licensed programs with PTFs applied to target site systems.
- If the central site system received PTFs on tape and wants to distribute the PTFs using object distribution, use the Copy PTF (CPYPTF) command to copy the PTFs to a save file. For more information about handling PTFs, see the *System Operator's Guide*, SC41-8082.

Rack or System Configuration Data

Rack configuration refers to the locations of components in the racks that make up a 9406 System. System configuration refers to the locations of components in the 9404 System Unit and the 9402 System Unit.

Rack and system configuration data must be considered separately when doing central site system distributions. Rack and system configuration data consists of:

- Hardware configuration of each system
- Resource names for devices on each system
- The IPL device and alternate IPL devices for each system
- Cable information for work stations and communication devices

Because this information may be different for each system, rack and system configuration data should not be part of central site system distributions. The rack and system configuration data only has meaning to the system it was created on.

When each system leaves the factory, the essential rack and system configuration data is on the system. The remainder of the rack and system configuration about using cables is completed by the service representative when the system is installed. At this point, the Work with Hardware Products (WRKHDWPRD) command is used to print out the rack and system configuration, and a copy is filed in the *Operator's Guide* or some other convenient location.

The WRKHDWPRD Menu has options to save the rack and system configuration data to a file named QASURACK in library QUSRSYS for backup purposes.

The rack and system configuration printout is needed at each target site system for part location during problem resolution and for configuration. The resource names assigned by the system must be used when creating configuration descriptions.

In a network, this rack and system configuration data can be available to the central site by having the central site system do a remote sign-on and by displaying the rack and system configuration at the central site system.

Save and Restore Strategy

The save and restore strategy should be considered when making distributions from a central site system. The save and restore strategy can vary from target site systems that are attended and somewhat independent of other systems, to unattended systems in a distributed systems network.

Attended Target Site Systems

The strategy for saving and restoring the attended target site systems can be defined by using the normal save and restore activities described in the *Backup and Recovery Guide*. Normal save and restore activities allow for flexibility when saving the system, licensed programs, and user libraries for each individual system.

Unattended Systems in a Communications Network

The design and control of the save and restore strategy for unattended target site systems is the responsibility of the central site system. The central site system decides what critical user information must be saved, and can provide, through communications, backup at the central site system.

Electronic Customer Support Considerations

On the first installation of the operating system from the central site system distribution tape, the electronic customer support data will include the name, address, and telephone numbers that were established at the central site system. The target site system must do the following to correct the electronic customer support data:

1. Change the electronic customer support data telephone numbers that are automatically dialed by running the following control language (CL) programs:
 - For service, type QESPHONE and press the Enter key.
 - For marketing, type QTIPHONE and press the Enter key.

The toll-free telephone numbers for the target site systems must be checked since different prefixes may be needed to make the target site systems dial correctly. In many cases, different toll-free numbers may be required. You can contact the service branch office to get the correct numbers to use. Contact the marketing branch office to get the local telephone numbers to use if any IBM link functions will be available from the target site systems.

2. The information in the contact database must also be changed to include a person and a voice telephone number at the location of the AS/400 system. This telephone number is needed to ensure that any service calls placed by using the AS/400 electronic customer support will be handled properly.

You can have all service calls from the target site system returned to a central site system person or group, such as a help desk. The service branch office can have a special message included in the service call. The message is used to give special instructions to the service representative, such as, call your help desk on every call.

Chapter 3. Installing Applications and Restoring Objects Using a User-Defined Installation Program

When you use automatic installation, you can perform the following tasks automatically by creating a program that performs the tasks and sends the appropriate instructions to the target site system operator:

- Restore user profiles using the Restore User Profile (RSTUSRPRF) command.
- Restore configuration information using the Restore Configuration (RSTCFG) command.
- Restore authorizations using the Restore Authority (RSTAUT) command.
- Restore user libraries using the Restore Library (RSTLIB) command.
- Restore a secondary language by using the Restore Library (RSTLIB) command.
- Install applications by using Control Language (CL) commands.

Before you create a distribution tape, copy the program that is appropriate for the target site system to QLPUSER in the QGPL library. During an automatic installation, the program will be run after all IBM-supplied programs are successfully installed, if the distribution tape contains the QLPUSER program in the QGPL library.

Note: If the QLPUSER program already exists in the QGPL library, it is deleted during automatic installation before the QGPL library is restored. This ensures that the distribution tape will control additional processing. The central site must have a separate copy of the QLPUSER program if automatic installation of IBM-supplied tapes is used at the central site system.

Using the QLPUSER Program

If you want to perform the tasks listed above (or others) automatically, you must create a program named QLPUSER in the QGPL library. This program performs these tasks and sends appropriate instructions to the operator at the target site system.

The following example is a Control Language (CL) program that sends an instruction to the operator at the target site system, restores a library containing an application, and copies the command to start the application in the QGPL library:

```
PGM
SNDUSRMSG MSG('Load the tape containing Application 1, then press Enter.')
RSTLIB SAVLIB(APP1) DEV(TAP01)
CRTDUPOBJ OBJ(STRAPP1) FROMLIB(APP1) OBJTYPE(*CMD) TOLIB(QGPL)
ENDPGM
```

You should keep a copy of this program in one of your user libraries. If you have several target site systems that need unique processing, you should create a separate program for each target site system.

You should test your user-defined installation program to make sure it works as expected before creating the distribution tapes.

If you use the QLPUSER program in the QGPL library to install your own applications, the applications must be on a separate tape. You cannot stack your applications on the end of the distribution tape. Your QLPUSER program should instruct the operator at the target site system to load the appropriate tape. This can be done by sending a message or displaying a display that contains instructions for the operator.

Verifying the Operation of the QLPUSER Program at the Target Site System

After the installation of distribution tapes is completed at the target site system, the operator at the target site system should verify the installation was successful, by selecting option 50 (Display log for messages) on the LICPGM menu. For more information about option 50 on the LICPGM menu, see the *Licensed Programs and New Release Installation Guide*, SC41-9878.

If you used the QLPUSER program in the QGPL library and the installation of IBM-supplied products was successful, the following messages may be displayed when the target site system uses Option 50 (Display log for messages) to verify the installation:

- CPI3D80: User installation processing started
- CPC3D85: User installation processing completed
- CPI3D8B: User installation processing failed

You should instruct the target site system to verify they received the “User install processing completed” message. If the target site system received the “User install processing failed” message, this indicates that the QLPUSER program in the QGPL library was run, but one or more errors occurred. If none of these messages appear, this indicates that the QLPUSER program in the QGPL library did not exist on the distribution tape, or that the installation of IBM-supplied products was not successful. The job logs or history logs should be looked at to find the errors. The messages are only logged in the history log; they do not appear in the job logs.

If the installation of IBM-supplied products was successful, one of the following messages will appear in the job log.

- CPC3D85: User installation processing completed
- CPD3DD9: User installation processing failed
- CPI3DD7: No user installation processing defined

Chapter 4. Working with Installation Profiles

The following topics contain information to help you work with an installation profile. Using an installation profile allows you to use the automatic installation method. The automatic installation method reduces the number of tasks an operator must perform during the installation at the target site system.

An installation profile contains your choices of the tasks you want to happen during the installation process. The choices you make when creating an installation profile are only used at the target site system. The choices do not affect the central site system.

The following operator tasks are eliminated when you use an installation profile:

- Select function to restore licensed internal code
- Select option to install the operating system
- Confirm the installation of the operating system
- Select a language feature
- Confirm a language feature
- Select installation options
- Select IPL options
- Work with Licensed Programs menu

Advantages of Using an Installation Profile

Using an installation profile to install the tapes containing licensed programs and application programs has the following advantages:

- Reduces or eliminates tasks an operator at the target site system must do other than mounting distribution tapes
- Allows the central site planner to create customized installation profiles to control the installation at the target site system
- Provides the capability to restart after a failure, including the ways to bypass parts of the installation that were successful
- Reduces or eliminates messages during the installation
- Allows the central site planner to install applications or further customize the system after a successful installation, by using a user-defined installation program

Work with Installation Profiles Display

The Work with Installation Profiles display appears when you select option 41 (Work with installation profiles) on the LICPGM menu. To get the LICPGM menu, type GO LICPGM on the command line and press the Enter key.

Note: You must have both *SAVSYS special authority and *USE (or higher) authority to the QALPAUTO file in the QUSRSYS library, for option 41 (Work with installation profiles) to appear on the LICPGM menu. If option 41 does not appear on the LICPGM menu, call or send a system message to your system security officer. You must have *CHANGE authority to the QALPAUTO file in the QUSRSYS library to create, change, or delete installation profiles.

The Work with Installation Profiles display allows you to do the following:

- Create a new installation profile.
- Change an existing installation profile.
- Delete an existing installation profile.
- Display an existing installation profile.

```
Work with Installation Profiles

Type options, press Enter.
  1=Create  2=Change  4=Delete  5=Display

Opt      Installation Profile      Text
-      -
-      QCHGPRILNG      Change primary language
-      QINSNEWSYS      Install new AS/400
-      QRPLRELLVL      Replace current release

F3=Exit  F12=Cancel
```

Multiple tasks can be performed at the same time using the Work with Installation Profiles display. For example, you can create a new installation profile and delete an existing installation profile at the same time.

IBM provides you with three installation profiles. The installation profiles can be changed to meet your requirements, or can be used as is. You can use these three installation profiles or create your own profiles. The IBM-supplied installation profiles are:

- **QCHGPRILNG:** Change the primary language from a secondary language tape

If the QCHGPRILNG installation profile is used:

- The target site system must already have Version 2 Release 1 Modification 0 level of the licensed internal code, the OS/400 licensed program, and all of the appropriate target site system licensed programs installed.
- A separate copy of the secondary language tape must be distributed to the target site system.
- Do not select any licensed program product from the Saved Licensed Programs display.
- The QCHGPRILNG installation profile cannot be used to install additional licensed programs at the target site system using the automatic installation method.

- **QINSNEWSYS:** Install a new AS/400

If the QINSNEWSYS installation profile is used, the target site system must already have Version 2 Release 1 Modification 0 level of the licensed internal code installed.

- **QRPLRELLVL:** Replace the current release with a new release

Creating an Installation Profile

Select option 1 (Create) on the Work with Installation Profiles display to create an installation profile. Some or all of the displays listed below are shown depending on the options you select. Follow the instructions on these displays to complete the task. You can change the options or choose the defaults on these displays.

- Create Profile Details
- Create OS/400 Installing Options
- Create Restore Options
- Create Major System Options
- Create Licensed Program Options

If you need more information about the displays, see "Creating and Changing an Installation Profile" in this chapter.

Changing an Installation Profile

Select option 2 (Change) on the Work with Installation Profiles display to change an installation profile. Some or all of the displays listed below are shown depending on the options you select. Follow the instructions on these displays to complete the task. You can change the options or choose the defaults on these displays.

- Change Profile Details
- Change OS/400 Installing Options
- Change Restore Options
- Change Major System Options
- Change Licensed Program Options

If you need more information about the displays, see "Creating and Changing an Installation Profile" in this chapter.

Creating and Changing an Installation Profile

The following information goes into further detail about creating or changing an installation profile. You may or may not need this information after using the information in "Creating an Installation Profile" or "Changing an Installation Profile."

After you select option 1 (Create) or option 2 (Change) on the Work with Installation Profiles display, the following display appears (example only):

Note: The word *Create* appears as the first word in the display title if you select option 1 (Create). The word *Change* appears as the first word in the display title if you select option 2 (Change). That is the only difference between the displays when creating and changing an installation profile.

Change Profile Details Display

```
Change Profile Details
Installation Profile . . . . . : INSTALLX
Type choices, press Enter.
Type of install . . . 1      1=Replace current release with new release
                             2=Install new AS/400
                             3=Change primary language using secondary
                               language tape
Text . . . . . Installs Release X_____
F3=Exit  F12=Cancel
```

The Change Profile Details display contains the following information:

- Installation profile

This field is an output-only field. The system automatically displays the installation profile name (INSTALLX in the example) you created or chose on the Work with Installation Profiles display. You cannot change the name of the installation profile; instead, you must delete the name of an existing installation profile by selecting option 4 (Delete) on the Work with Installation Profiles display and then selecting option 1 (Create) on the Work with Installation Profiles display.

- Type of install

This input field specifies the type of installation you want. The number of the installation option you choose is used to prompt you for the displays required to complete this task. It is also used to provide appropriate defaults for those prompts.

If option 1 (Replace current release with new release) is selected, a new release is installed on the system.

If option 2 (Install new AS/400) is selected, the target site system must already have Version 2 Release 1 Modification 0 level of the licensed internal code installed.

If option 3 (Change primary language using secondary language tape) is selected:

- The target site system must already have Version 2 Release 1 Modification 0 level of the licensed internal code, OS/400, and all of the appropriate target site system licensed programs installed.
- A separate copy of the secondary language tape must be distributed to the target site system.
- Do not select any licensed program product from the Saved Licensed Programs display.
- Option 3 cannot be used to install additional licensed programs at the target site system using the automatic installation method.

- Text

This is an input field. You can enter any descriptive information about the installation profile (up to 50 characters).

Change OS/400 Installing Options Display

If you select option 1 (Replace current release with new release) or option 2 (Install new AS/400) for Type of install on the Change Profile Details display, the system will display the Change OS/400 Installing Options display (example only):

Note: If you select option 3 (Change primary language using secondary language tape), see “Change OS/400 Installing Options Display” on page 4-7.

```

Change OS/400 Installing Options

Installation Profile . . . . . : INSTALLX

Type choices, press Enter.

Restore option . . . . . 1      1=Restore programs and language objects
                                from distribution tape
                                2=Do not restore programs or language
                                objects
                                3=Restore only language objects from
                                distribution tape

Clear job and output
queues . . . . . N      Y=Yes, N=No

F3=Exit  F12=Cancel

```

The OS/400 Installing Options display contains the following information:

- Installation profile

This field is an output-only field. The system automatically displays the installation profile name (INSTALLX in the example) you created or chose on the Work with Installation Profiles display. You cannot change the name of the installation profile; instead, you must delete the name of an existing installation profile by selecting option 4 (Delete) on the Work with Installation Profiles display and then selecting option 1 (Create) on the Work with Installation Profiles display.
- Restore option

This input field specifies which programs and objects will be restored during the installation of the OS/400 licensed program.

 - If you select option 1, the programs and language objects are restored from the distribution tape.
 - If you select option 2, the current programs and language objects are left on the system.
 - If you select option 3, only those objects that make up the national language are loaded on the system.
- Clear job and output queues

This is an input field. If you want to clear the job and output queues during the installation, type Y (Yes). If you do not want to clear the job and output queues, type N (No).

For more information about installing options, see the information about "Working with the Save and Restore Processes," in the *Backup and Recovery Guide*, SC41-8079.

Change Restore Options Display

If you select option 1 (Restore programs and language objects from distribution tape) on the OS/400 Installing Options display, the system will display the Change Restore Options display (example only):

```
Change Restore Options
Installation Profile . . . . . : INSTALLX
Type choices, press Enter.
System values . . . . . 3      1=Yes, 2=No
                               3=Target system default
Edit descriptions . . . . . 3    1=Yes, 2=No
                               3=Target system default
Message reply list . . . . . 3   1=Yes, 2=No
                               3=Target system default

F3=Exit  F12=Cancel
```

The Change Restore Options display contains the following information:

- **Installation profile**
This field is an output-only field. The system automatically displays the installation profile name (INSTALLX in the example) you created or chose on the Work with Installation Profiles display. You cannot change the name of the installation profile; instead, you must delete the name of an existing installation profile by selecting option 4 (Delete) on the Work with Installation Profiles display and then selecting option 1 (Create) on the Work with Installation Profiles display.
- **System values**
This is an input field.
 - If you select option 1 (Yes), the system values are restored from tape. This is the recommended option for installing a new AS/400 system.
 - If you select option 2 (No), the system is installed with no change to the system values or the network attributes that are currently on the system.
 - If you select option 3 (Target system default), the installation program decides which installation option to use during the installation process (based on the state of the target site system). This is the recommended option for installing a new release.

- Edit descriptions

This is an input field.

- If you select option 1 (Yes), the edit descriptions are loaded from tape. This is the recommended option for installing a new AS/400 system.
- If you select option 2 (No), the system is installed with no change to the edit descriptions currently on the system.
- If you select option 3 (Target system default), the installation program decides which installation option to use during the installation process (based on the state of the target site system). This is the recommended option for installing a new release.

- Message reply list

This is an input field.

- If you select option 1 (Yes), the message reply list is loaded from tape. This is the recommended option for installing a new AS/400 system.
- If you select option 2 (No), the system is installed with no change to the message reply list currently on the system.
- If you select option 3 (Target system default), the installation program decides which installation option to use during the installation process (based on the state of the target site system). This is the recommended option for installing a new release.

For more information about restore options, see the information about “Working with the Save and Restore Processes,” in the *Backup and Recovery Guide*, SC41-8079.

Change OS/400 Installing Options Display

If you select option 3 (Change primary language using secondary language tape) on the Change Profile Details display, the system will display the *Language feature* prompt (example only):

```
Change OS/400 Installing Options
Installation Profile . . . . . : INSTALLX
Type choices, press Enter.
Language feature . . . . . 2924 Code
Clear job and output
queues . . . . . N Y=Yes, N=No

F3=Exit F12=Cancel
```

The Change OS/400 Installing Options display contains the following information:

- Installation profile

This field is an output-only field. The system automatically displays the installation profile name (INSTALLX in the example) you created or chose on the Work with Installation Profiles display. You cannot change the name of the installation profile; instead, you must delete the name of an existing installation profile by selecting option 4 (Delete) on the Work with Installation Profiles display and then selecting option 1 (Create) on the Work with Installation Profiles display.

- Language feature

You can specify a language feature code for the primary language in this input field. Language feature code 2924 is shown in the example; a different language feature code may be shown in your case.

For a list of language feature codes, place the cursor in this field and press the Help key.

- Clear job and output queues

This is an input field. If you want to clear the job and output queues during the installation, type Y (Yes). If you do not want to clear the job and output queues, type N (No).

For more information about installing options, see the information about "Working with the Save and Restore Processes," in the *Backup and Recovery Guide*, SC41-8079.

Change Major System Options Display

After you select the appropriate options on the Change Restore Options display or the Change OS/400 Installing Options display and press the Enter key, the Change Major System Options display appears (example only):

```
Change Major System Options

Installation profile . . . . . : INSTALLX

Type choices, press Enter.

Enable automatic
configuration . . . *SAME *SAME, Y=Yes, N=No

Device configuration
naming . . . . . *SAME *SAME, *NORMAL
*S36, *DEVADR

Default special
environment . . . . *SAME *SAME, *NONE, *S36

F3=Exit F12=Cancel
```

The Change Major System Options display contains the following information:

- Installation profile

This field is an output-only field. The system automatically displays the installation profile name (INSTALLX in the example) you created or chose on the Work with Installation Profiles display. You cannot change the name of the installation profile; instead, you must delete the name of an existing installation profile by selecting option 4 (Delete) on the Work with Installation Profiles display and then selecting option 1 (Create) on the Work with Installation Profiles display.

- Enable automatic configuration

The value *SAME means using the current values at the target site system without changing those values. The value Y (Yes) automatically configures local devices. An N (No) indicates no automatic configuration. Specifying a value other than *SAME causes the QAUTOCFG system value to be changed at the target site system. For more information about automatic configuration, see the *Device Configuration Guide*, SC41-8106.

- Device configuration naming

The value *SAME means using the current values at the target site system without changing those values. The value *NORMAL uses a naming convention unique to the AS/400 system; for example, DSP01 and PRT01 for display stations and printers, TAP01 and DKT01 for tapes and diskettes. The value *S36 uses a naming convention similar to System/36; for example, W1 and P1 for display stations and printers, T1 and I1 for tapes and diskettes. The value *DEVADR uses device names that are derived from resource names. Specifying a value other than *SAME causes the QDEVNAMING system value to be changed at the target site system. For more information about device configuration naming, see the *Device Configuration Guide*, SC41-8106.

- Default special environment

The value *SAME means using the current values at the target site system without changing those values. The value *NONE indicates there is no special environment. The value *S36 sets up the System/36 environment. Specifying a value other than *SAME causes the QSPCENV system to be changed at the target site system. For more information about working in the System/36 environment on the AS/400 system, see the *Programming: Concepts and Programmer's Guide for the System/36 Environment*, SC41-9663.

Change Licensed Program Options Display

After you select the appropriate options on the Change Major System Options display and press the Enter key, the Change Licensed Program Options display appears (example only):

```
Change Licensed Program Options

Installation Profile . . . . . :  INSTALLX

Type choices, press Enter.

Install option . . . . 4          1=Installed products
                                2=All products
                                3=New products
                                4=Target system default

Tape device . . . . . *ALTIPL__  *ALTIPL, Name

Program temporary
fixes . . . . . 1              1=Load and temporarily apply
                                2=Do not load

Perform IPL . . . . . Y          Y=Yes, N=No

F3=Exit  F12=Cancel
```

The Change Licensed Program Options display contains the following information:

- Installation profile

This field is an output-only field. The system automatically displays the installation profile name (INSTALLX in the example) you created or chose on the Work with Installation Profiles display. You cannot change the name of the installation profile; instead, you must delete the name of an existing installation profile by selecting option 4 (Delete) on the Work with Installation Profiles display and then selecting option 1 (Create) on the Work with Installation Profiles display.

- Install options

- Installed products: Specifies to install all licensed programs, language objects for the licensed programs, and optional items of the licensed programs that are currently installed on the target site system.

Note: The distribution tape must contain all products currently installed on the target site system for the *Installed products* option to successfully complete an installation.

- All products: Specifies to install all licensed programs, language objects for the licensed programs, and optional items of the licensed programs that are found on the distribution tape.
- New products: Specifies to install only those licensed programs, language objects for the licensed programs, and optional items of the licensed programs that do not already exist on the system. Choose this option if you are adding new licensed programs to the target site system.
- Target system default: Specifies to have the installation program decide which option to use during the installation process. If the target site system has any operating system options from a prior release, or any

licensed programs currently installed, the system uses option 1 (Installed products). If the target site system does not have any operating system options from a prior release, or any licensed programs currently installed, the system uses option 2 (All products).

- Tape device

Type the name of the tape device you are using for the installation process.

The value *ALTIPL means the tape device used to install the operating system is used. Select this option if you are creating an installation profile for use at several target site systems that may use different names for tape devices.

You can specify the device name of the tape unit on the target site system.

- Program temporary fixes

- Load and temporarily apply: Specifies to load program temporary fixes from the tape and temporarily apply them. Program temporary fixes are only loaded and temporarily applied for the licensed programs found on the system.
- Do not load: Specifies not to load any program temporary fixes from the distribution tape. This is the recommended option if you applied PTFs to the target site system before creating the distribution tape.

- Perform IPL

The value Y (Yes) specifies to perform an automatic IPL after the installing process is complete. An automatic IPL is done only if the installation function completes successfully. An N (No) specifies not to perform an automatic IPL. The Sign On display is shown after the installation process is complete.

For more information about licensed program options, see Appendix B, "Options on Work with Licensed Programs Menu" in the *Licensed Programs and New Release Installation Guide*, SC41-9878.

When you have finished creating or changing an installation profile, press the Enter key to complete the task.

Displaying an Installation Profile

Option 5 (Display) on the Work with Installation Profiles display is for **viewing only**. You cannot select options or enter information using the display function. The displays show only the values you selected on the Work with Installation Profiles display and displays that follow.

For example, when you select option 5 (Display) on the Work with Installation Profiles display, the Display Profile Details display appears showing only the values you previously selected (example only):

```

                                Display Profile Details

Installation Profile : INSTALLX
Type of install . . : 1      1=Replace current release with new release
Text . . . . . Install new AS/400

Press Enter to continue.

F3=Exit  F12=Cancel

```

When you have finished displaying an installation profile, press the Enter key to complete the task.

Deleting an Installation Profile

After you select option 4 (Delete) on the Work with Installation Profiles display, the following display appears (example only):

```

                                Confirm Delete of Profiles

Press enter to confirm your choices for 4=Delete.
Press F12 to return to change your choices.

Opt      Installation
         Profile      Text
4        INSTALLX    Install Release X

F12=Cancel

```

Press the Enter key to delete an installation profile and to complete the task.

Chapter 5. Preparing and Installing Distribution Tapes

This chapter contains a summary of a central site system distribution that includes information on:

- Things to do before you create the distribution tape
 - Preparing the distribution tape
 - Installing the distribution tape at the target site system using:
 - A sample cover sheet for the distribution package
- Note:** You can copy the cover sheet in Appendix B, "Central Site Distribution Cover Sheet," to include with your distribution tape. You should change the cover sheet to meet your particular distribution needs.
- Sample instructions for installing the distribution tape

Things to Do Before You Create a Distribution Tape with LICPGM Menu Option 40

Do the following before you create a distribution tape with LICPGM Menu Option 40:

- Create or change your user-defined installation program (if you are using a user-defined installation program). See Chapter 3, "Installing Applications and Restoring Objects Using a User-Defined Installation Program" for information about user-defined installation programs.
- Create or change your installation profile or use an IBM-supplied installation profile (if the target site system is using automatic installation). See Chapter 4, "Working with Installation Profiles" for information about installation profiles.
- Make sure the most current Program Temporary Fixes (PTFs) are installed on the central site system. See Chapter 2, "Planning Licensed Program Distributions" for information about PTFs.
- Compress objects. You can use the Compress Object (CPROBJ) command to compress selected IBM-supplied and user objects to save disk space on the AS/400 system. For more information about data compression, see the *Programming: Control Language Programmer's Guide*, SC41-8077. For more information about the CPROBJ command, see the *Programming: Control Language Reference*, SC41-0030.
- Rename or delete the history logs on the central site system so they do not get distributed to the target site system (do this just before creating the distribution tape). To rename or delete the history logs, do the following:
 1. Type the Display History Log (DSPLOG QHST) command to make sure all messages are written to the history log:
DSPLOG QHST
Press the Enter key after the history log is shown.
 2. Type the Work with Objects and Display All History Logs (WRKOBJ QSYS/QHST*) command to work with all of the history logs:
WRKOBJ QSYS/QHST*

Press the Enter key.

3. Use the rename or delete option on each history log to make sure the history logs will not be distributed to the target site system.

Preparing the Distribution Tape

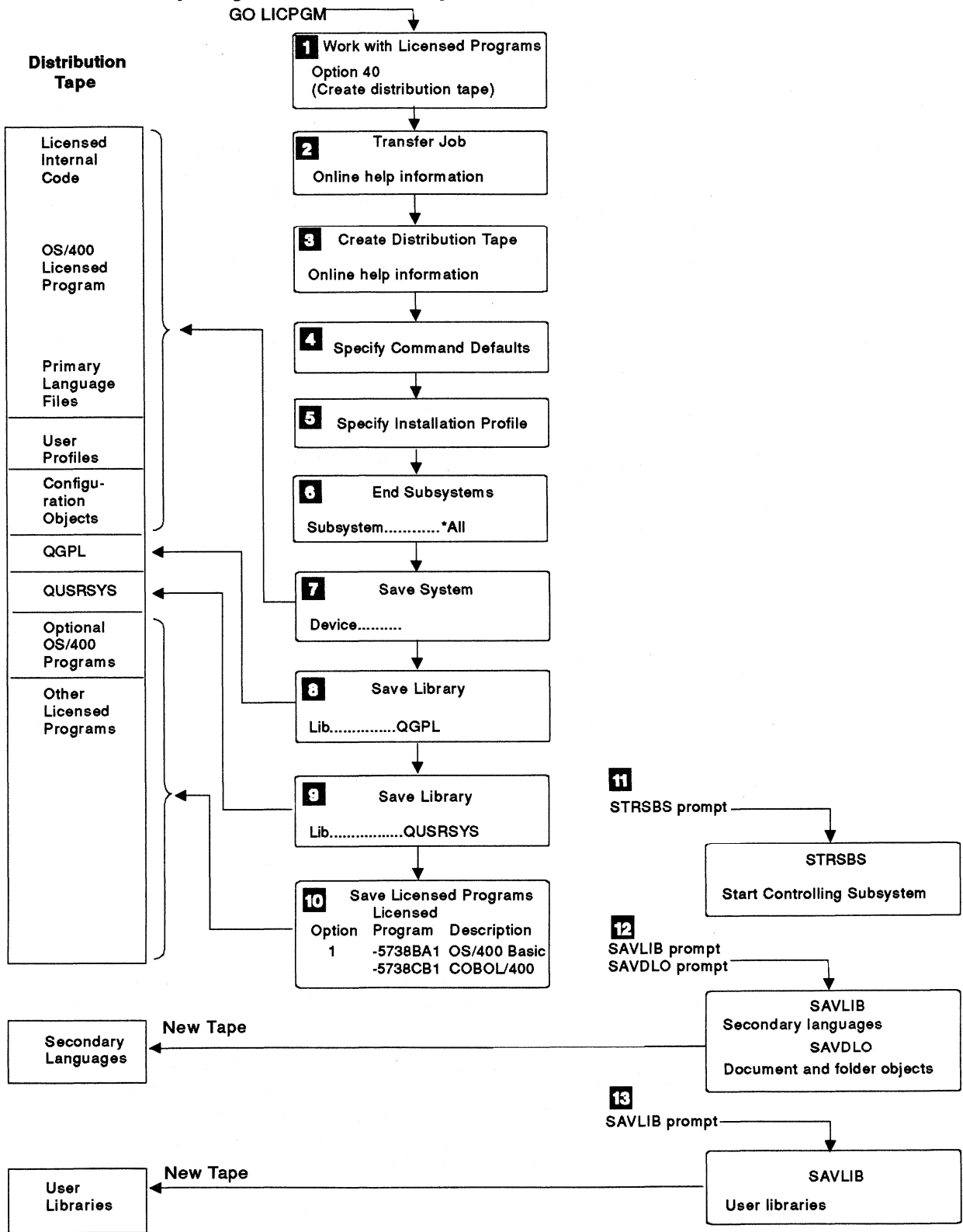
Creating the distribution tape requires a dedicated system and both *SAVSYS and *JOBCTL special authority. The following method for preparing the distribution tape describes how to use option 40 (Create distribution tape) on the LICPGM menu.

If an error occurs while preparing the distribution tape, use the job log and history log to determine the error.

If the target site system is using automatic installation, you must create or change an installation profile or use an IBM-supplied installation profile. Chapter 4, "Working with Installation Profiles" contains information about creating or changing an installation profile and using an IBM-supplied installation profile.

If you select a base licensed program, it is recommended you also select the optional licensed programs for the base licensed program. This ensures the PTF index on the target site system is updated correctly. After installation is complete at the target site system, use the Delete Licensed Program (DLTLICPGM) command to delete the optional licensed programs that are not needed. If you do not want to select an optional licensed program for a base licensed program, make sure you delete the optional licensed program before you create the distribution tape.

Preparing the Distribution Tape



RV20626-0

The numbers on this page correspond to the reverse image numbers on the illustration on the previous page.

- 1** Type `GO LICPGM` to see the Work with Licensed Program menu. Select option 40 (Create distribution tape) to guide you through the displays to create the distribution tape.
- 2** If you are not operating under the controlling subsystem, the online help information for the Transfer Job (TFRJOB) command shows you how to transfer your job to the controlling subsystem so you can end subsystems. After you transfer your job to the controlling subsystem, make sure you repeat step **1**.
- 3** The online help information explains the process of creating a distribution tape.
- 4** Specify the command defaults for the *Tape Devices* and *Check for Active Files* prompt. The tape devices can be any tape devices attached to the system that have the same format as the target site system.
Note: For specific information about data compression and data compaction, see the data compression and data compaction topics in the *Backup and Recovery Guide*, SC41-8079.
- 5** Specify the name of the installation profile you want to save on the SAVSYS tape. If you specify *NONE, the target site system cannot use automatic installation. If you specify the name of an installation profile, the target site system can use automatic installation to eliminate all user interaction except for loading distribution tapes and verifying the installation was successful. See Chapter 4, "Working with Installation Profiles" for information about installation profiles.
- 6** The End Subsystems (ENDSBS) command ends all subsystems.
- 7** The Save System (SAVSYS) command saves the licensed internal code, the OS/400 licensed program, security objects, and configuration objects.
- 8** Save the QGPL library after the SAVSYS. The LIBRARY parameters are QGPL and the LABEL parameter is a constant that has the primary language identifier of the central site system. For example, QGPL.L29xx is a language identifier where xx are the last two digits of the primary language ID.
- 9** Save the QUSRSYS library after saving QGPL. The LIBRARY parameters are QUSRSYS and the LABEL parameter is a constant that has the primary language identifier of the central site system. For example, QUSRSYS.L29xx is a language identifier where xx are the last two digits of the primary language ID.
- 10** Type a 1 next to the licensed programs you want to include on your distribution tape from the Save Licensed Programs menu. You must select the OS/400 Extended Base and OS/400 Online Information licensed programs. All parts of the licensed program are saved, including the program objects, language objects, and document or folder objects. Any loaded or applied PTFs are also saved with the licensed programs.
- 11** The Start the Controlling Subsystem (STRSBS) command starts the controlling subsystem.
- 12** If secondary languages are to be distributed, start a new tape and use the Save Library (SAVLIB) command to save the secondary languages on the distribution tape. The saved library for secondary languages will be

named QSYS29xx. You must also save the document and folder objects for the secondary language by using the Save Document Library Objects (SAVDLO) command to save QWP29xx, QPRF29xx, and QDIA29xx. You only need to save QWP29xx and QPRF29xx if the target site system uses AS/400 Office or OfficeVision/400. In the preceding object names, xx are the last two digits of the primary language ID and the secondary language ID.

- 13** If user libraries are to be distributed, start a new tape and use the Save Library (SAVLIB) command to save the user libraries on the distribution tape. The QLPUSER program in the QGPL library can be used to restore the user libraries at the target site system. See Chapter 3, "Installing Applications and Restoring Objects Using a User-Defined Installation Program" for information about creating a program that performs installation tasks.

Installing the Distribution Tape at the Target Site System

Install the distribution tape using the *Licensed Programs and New Release Installation Guide*, SC41-9878, or *Automatic Installation Guide*, SX41-9072.

Note: The rack configuration for a target site system that has an AS/400 Model 9406 must be saved on tape before the start of the remote site system licensed program installation. See "Rack or System Configuration Data" in Chapter 2 for more information about saving the rack configuration of a 9406 target site system.

The central site system must provide instructions to the target site systems on installing user libraries and applications.

You can copy the cover sheet in Appendix B, "Central Site Distribution Cover Sheet," to include with your distribution tape.

For automatic installation, use the following instructions to install the distribution tape:	For manual installation, use the following instructions to install the distribution tape:
Part 2, "Replacing a Release Using Automatic Installation" of the <i>Licensed Programs and New Release Installation Guide</i> , SC41-9878, or, <i>Automatic Installation Guide</i> , SX41-9072	Part 3, "Replacing a Release Using Manual Installation" of the <i>Licensed Programs and New Release Installation Guide</i> , SC41-9878, or, <i>Automatic Installation Guide</i> , SX41-9072

You should include a listing from the Display Tape (DSPTAP) command with the distribution tapes you send to the target site system. The listing can be used by the target site system to locate a specific licensed program on the tapes.

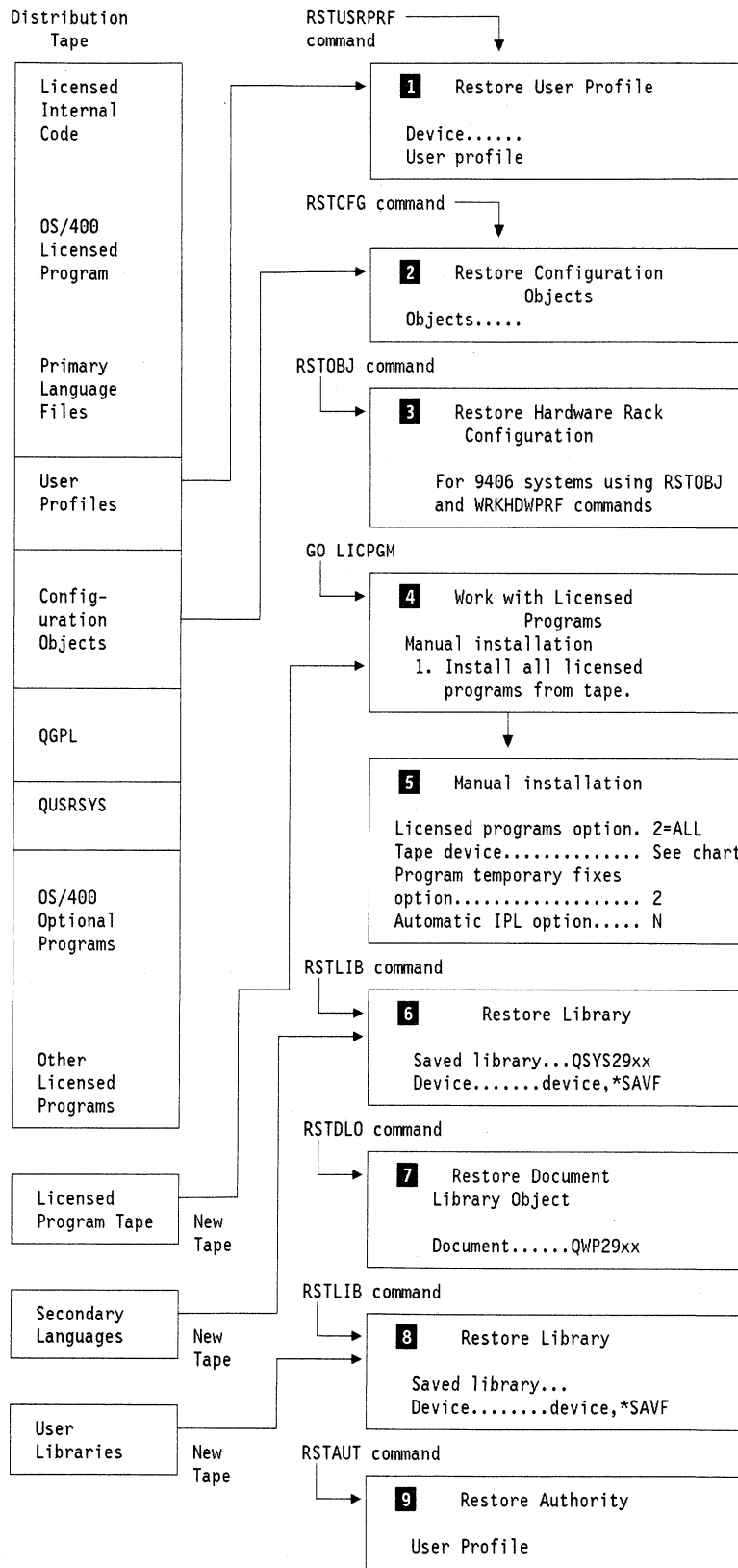
Optional Tasks for Installing Distribution Tapes

The following tasks are optional; however, you may want to perform them when you install your distribution tapes.

These tasks can be done automatically using a user-defined installation program (see Chapter 3, "Installing Applications and Restoring Objects Using a User-Defined Installation Program" in this manual), or by manual installation.

If you want the user-defined installation program to restore user profiles or configuration information from the distribution tape, the user-defined installation program must instruct the operator at the target site system to mount the distribution tape containing the the user profiles or configuration information.

Optional Tasks for Installing Distribution Tapes



The numbers on this page correspond to the reverse image numbers on the illustration on the previous page.

Restoring User Profiles and Configuration Objects

For a new release installation, the target site system configuration and user profiles will remain intact using the installation process; however, if you want to replace the system configuration and user profiles with the ones on the distribution tapes, do the following:

The Display Tape (DSPTAP) listing can be used to locate your user profiles and configuration data.

- 1** Type the Restore User Profile (RSTUSRPRF) command. The parameters on this command can be furnished by the central site system, or you can refer to the *Backup and Recovery Guide*.
- 2** Type the Restore Configuration (RSTCFG) command. The parameters on this command can be furnished by the central site system or you can refer to the *Backup and Recovery Guide*.
- 3** Restore the rack configuration data previously saved on tape. Use the Restore Object (RSTOBJ) command to restore objects to the system from tape, then use the Work with Hardware Products (WRKHDWPD) command to replace the rack configuration.

Installing Additional Licensed Programs

- 4** Type GO LICPGM from the command line and select option 1 (Install all licensed programs from tape).
- 5** Select option 2 (All licensed programs).

Type the name of the tape unit for the target site system and press the Enter key.

If the PTFs have been applied at the central site system, select option 2 (Do not load) and select N as the Automatic IPL option.

See Part 6, "Installing Additional Licensed Programs," in the *Licensed Programs and New Release Installation Guide*, SC41-9878, for specific information on installing additional licensed programs.

Installing Secondary Languages

- 6** If you have secondary languages on your distribution tape, restore them using the Restore Library (RSTLIB) command.
- 7** Restore the document and folder objects for the secondary language by using the Restore Document Library Object (RSTDLO) command to restore QWP29xx and QPRF29xx.

Installing User Libraries

- 8** If you have user libraries on your distribution tape, restore them using the Restore Library (RSTLIB) command.
- 9** Restore the object use authorities using the Restore Authority (RSTAUT) command.

Appendix A. Licensed Program File Names

You can use the Display Tape (DSPTAP) command to display the contents of your distribution tape.

The following list shows the file names for licensed program files. The list also shows all licensed programs. The files on your distribution tape depend on the licensed programs you want to distribute.

Note: The file QINPREP will appear on the list of file names supplied by IBM; however, this file will not appear on the distribution tape created using option 40 (Create distribution tape).

<i>Figure A-1 (Page 1 of 10). IBM Distribution Tape File Names</i>			
Tape Filename	Feature ID	Description	Optional Part
5738-SS1 OS/400			
QFILEIML		IML bootstrap file	
QFILEMCD		All licensed internal code file	
QV2R1M0.L29__		Primary language indicator file (installation use)	
QFILEIPL		Install file	
QFILEIN		Install file	
QFILE		Install file	
QSYS		QSYS library file	
QSS1.L29__.A00		QSYS MRI install file	Base
QSS1.L29__.A01		QSYS MRI library file	Base
QSS1.L29__.A02		QSYS MRI library file	Base
QINPREP		Install file	
QGPL.L29__		QGPL MRI library file	
QUSRSYS.L29__		QUSRSYS MRI library file	
Q5738SS1.B00		QGDDM install file	1
Q5738SS1.B01		QGDDM library file	1
Q5738SS1.B02		QQALIB install file	1
Q5738SS1.B03		QQALIB library file	1
Q5738SS1.B04		QSYS2	1
Q5738SS1.B05		QSYS2	1
Q5738SS1.C00		QHLPSYS install file	2
Q5738SS1.C01		QHLPSYS library file	2

Figure A-1 (Page 2 of 10). IBM Distribution Tape File Names

Tape Filename	Feature ID	Description	Optional Part
Q5738SS1.D00		QSDE install file	3
Q5738SS1.D01		QSDE library file	3
Q5738SS1.E00		QMGU install file	4
Q5738SS1.E01		QMGU library file	4
Q5738SS1.F00		QSSP install file	5
Q5738SS1.F01		QSSP library file	5
Q5738SS1.F02		#DFULIB install file	5
Q5738SS1.F03		#DFULIB library file	5
Q5738SS1.F04		#SEULIB install file	5
Q5738SS1.F05		#SEULIB library file	5
Q5738SS1.F06		#DSULIB install file	5
Q5738SS1.F07		#DSULIB library file	5
Q5738SS1.F08		#SDALIB install file	5
Q5738SS1.F09		#SDALIB library file	5
Q5738SS1.F10		#CGULIB install file	5
Q5738SS1.F11		#CGULIB library file	5
Q5738SS1.G00		QSYS38 install file	6
Q5738SS1.G01		QSYS38 library file	6
Q5738SS1.H00		QUSRTOOL install file	7
Q5738SS1.H01		QUSRTOOL library file	7
Q5738SS1.I00		QFNTCPL font install file	8
Q5738SS1.I01		QFNTCPL font library file	8
Q5738SS1.J00		QSYSPRV install file	9
Q5738SS1.J01		QSYSPRV library file	9
QSS1.L29__B00		QGDDM MRI install file	1
QSS1.L29__B01		QGDDM MRI library file	1
QSS1.L29__B02		QQALIB MRI install file	1
QSS1.L29__B03		QQALIB MRI library file	1
QSS1.L29__B04		MRI folders file	1
QSS1.L29__C00		QHLPSYS MRI install file	2
QSS1.L29__C01		QHLPSYS MRI library file	2
QSS1.L29__D00		QSDE MRI install file	3
QSS1.L29__D01		QSDE MRI library file	3
QSS1.L29__E00		QMGU MRI install file	4
QSS1.L29__E01		QMGU MRI library file	4
QSS1.L29__F00		QSSP MRI install file	5
QSS1.L29__F01		QSSP MRI library file	5
QSS1.L29__F02		#DFULIB MRI install file	5
QSS1.L29__F03		#DFULIB MRI library file	5
QSS1.L29__F04		#SEULIB MRI install file	5
QSS1.L29__F05		#SEULIB MRI library file	5
QSS1.L29__F06		#DSULIB MRI install file	5
QSS1.L29__F07		#DSULIB MRI library file	5
QSS1.L29__F08		#SDALIB MRI install file	5
QSS1.L29__F09		#SDALIB MRI library file	5

Figure A-1 (Page 3 of 10). IBM Distribution Tape File Names

Tape Filename	Feature ID	Description	Optional Part
QSS1.L29_.F10		#CGULIB MRI install file	5
QSS1.L29_.F11		#CGULIB MRI library file	5
QSS1.L29_.G00		QSYS38 MRI install file	6
QSS1.L29_.G01		QSYS38 MRI library file	6
QSS1.L29_.H00		QUSRTOOL MRI install file	7
QSS1.L29_.H01		QUSRTOOL MRI library file	7
QSS1.L29_.J00		QSYSPRV MRI install file	9
QSS1.L29_.J01		QSYSPRV MRI library file	9
5738-CM1 Communications Utilities			
Q5738CM1.A00		QRJE install file	Base
Q5738CM1.A01		QRJE library file	Base
QCM1.L29_.A00		QRJE install file	Base
QCM1.L29_.A01		QRJE library file	Base
5738-WP1 OfficeVision/400			
Q5738WP1.A00		QOFC install file	Base
Q5738WP1.A01		QOFC library file	Base
QWP1.L29_.A00		QOFC install file	Base
QWP1.L29_.A01		QOFC library file	Base
QWP1.L29_.A02		QDOC folders file	Base
5738-DCT Language Dictionaries			
Q5738DCT.A00		QDCT install file	Base
Q5738DCT.A01		QDCT library file	Base
5738-QU1 Query			
Q5738QU1.A00		QQRYP LIB install file	Base
Q5738QU1.A01		QQRYP LIB library file	Base
QQU1.L29_.A00		QQRYP LIB install file	Base
QQU1.L29_.A01		QQRYP LIB library file	Base
5738-DS1 BGU			
Q5738DS1.A00		QBGU install file	Base
Q5738DS1.A01		QBGU library file	Base

Figure A-1 (Page 4 of 10). IBM Distribution Tape File Names

Tape Filename	Feature ID	Description	Optional Part
QDS1.L29__A00		QBGU install file	Base
QDS1.L29__A01		QBGU library file	Base
5738-PC1 PC Support			
Q5738PC1.A00		QIWS install file	Base
Q5738PC1.A01		QIWS library file	Base
Q5738PC1.B00		QIWSFS install file	1
Q5738PC1.B01		QIWSFS library file	1
Q5738PC1.B02		QDOC folders file	1
Q5738PC1.C00		QIWSFD install file	2
Q5738PC1.C01		QIWSFD library file	2
Q5738PC1.C02		QDOC folders file	2
Q5738PC1.D00		QIWS2S install file	3
Q5738PC1.D01		QIWS2S library file	3
Q5738PC1.D02		QDOC folders file	3
Q5738PC1.E00		S2D install file	4
Q5738PC1.E01		S2D library file	4
Q5738PC1.E02		C folders file	4
Q5738PC1.F00		QIWSPS install file	5
Q5738PC1.F01		QIWSPS library file	5
Q5738PC1.F02		QDOC folders file	5
Q5738PC1.G00		QIWSPD install file	6
Q5738PC1.G01		QIWSPD library file	6
Q5738PC1.G02		QDOC folders file	6
Q5738PC1.H00		QIWSTL install file	7
Q5738PC1.H01		QIWSTL library file	7
Q5738PC1.H02		QDOC folders file	7
QPC1.L29__A00		QIWS install file	Base
QPC1.L29__A01		QIWS library file	Base
QPC1.L29__B00		QIWSFS install file	1
QPC1.L29__B01		QIWSFS library file	1
QPC1.L29__B02		QDOC folders file	1
QPC1.L29__C00		QIWSFD install file	2
QPC1.L29__C01		QIWSFD library file	2
QPC1.L29__C02		QDOC folders file	2
QPC1.L29__D00		QIWS2S install file	3
QPC1.L29__D01		QIWS2S library file	3
QPC1.L29__D02		QDOC folders file	3
QPC1.L29__E00		QIWS2D install file	4
QPC1.L29__E01		QIWS2D library file	4
QPC1.L29__E02		QDOC folders file	4
QPC1.L29__F00		QIWSPS install file	5
QPC1.L29__F01		QIWSPS library file	5
QPC1.L29__F02		QDOC folders file	5
QPC1.L29__G00		QIWSPD install file	6
QPC1.L29__G01		QIWSPD library file	6
QPC1.L29__G02		QDOC folders file	6

Figure A-1 (Page 5 of 10). IBM Distribution Tape File Names

Tape Filename	Feature ID	Description	Optional Part
5738-PW1 Application Development Tools			
Q5738PW1.A00		QPDA install file	Base
Q5738PW1.A01		QPDA library file	Base
QPW1.L29__.A00		QPDA install file	Base
QPW1.L29__.A01		QPDA library file	Base
5738-AP1 Advanced DBCS Printer Support			
Q5738AP1.A00		QAPS install file	Base
Q5738AP1.A01		QAPS library file	Base
QAP1.L29__.A00		QAPS install file	Base
QAP1.L29__.A01		QAPS library file	Base
5738-ST1 SQL/400			
Q5738ST1.A00		QSQL install file	Base
Q5738ST1.A01		QSQL library file	Base
QST1.L29__.A00		QSQL install file	Base
QST1.L29__.A01		QSQL library file	Base
5738-RG1 RPG/400			
Q5738RG1.A00		QRPG install file	Base
Q5738RG1.A01		QRPG library file	Base
Q5738RG1.B00		#RPGLIB install file	1
Q5738RG1.B01		#RPGLIB library file	1
Q5738RG1.C00		QRPG38 install file	2
Q5738RG1.C01		QRPG38 library file	2
Q5738RG1.D00	6050	QRPGP (N-1) install file	3
Q5738RG1.D01	6050	QRPGP (N-1) library file	3
Q5738RG1.E00	6050	QRPGLIBP (N-1) install file	4
Q5738RG1.E01	6050	QRPGLIBP (N-1) library file	4
QRG1.L29__.A00		QRPG install file	Base
QRG1.L29__.A01		QRPG library file	Base
QRG1.L29__.B00		#RPGLIB install file	1
QRG1.L29__.B01		#RPGLIB library file	1
QRG1.L29__.C00		QRPG38 install file	2
QRG1.L29__.C01		QRPG38 library file	2

Figure A-1 (Page 6 of 10). IBM Distribution Tape File Names

Tape Filename	Feature ID	Description	Optional Part
5738-CB1 COBOL/400			
Q5738CB1.A00		QLBL install file	Base
Q5738CB1.A01		QLBL library file	Base
Q5738CB1.B00		#COBLIB install file	1
Q5738CB1.B01		#COBLIB library file	1
Q5738CB1.C00		QCBL install file	2
Q5738CB1.C01		QCBL library file	2
Q5738CB1.D00	6050	QLBLP (N-1) install file	3
Q5738CB1.D01	6050	QLBLP (N-1) library file	3
Q5738CB1.E00	6050	QCOBLIBP (N-1) install file	4
Q5738CB1.E01	6050	QCOBLIBP (N-1) library file	4
QCB1.L29__A00		QCBL install file	Base
QCB1.L29__A01		QCBL library file	Base
QCB1.L29__B00		#COBLIB install file	1
QCB1.L29__B01		#COBLIB library file	1
QCB1.L29__C00		QCBL install file	2
QCB1.L29__C01		QCBL library file	2
5738-BA1 BASIC			
Q5738BA1.A00		QBAS install file	Base
Q5738BA1.A01		QBAS library file	Base
QBA1.L29__A00		QBAS install file	Base
QBA1.L29__A01		QBAS library file	Base
5738-PL1 PL/I			
5738PL1.A00		QPLI install file	Base
5738PL1.A01		QPLI library file	Base
QPL1.L29__A00		QPLI install file	Base
QPL1.L29__A01		QPLI library file	Base
5738-PS1 Pascal			
Q5738PS1.A00		QPAS install file	Base
Q5738PS1.A01		QPAS library file	Base
QPL1.L29__A00		QPAS install file	Base
QPL1.L29__A01		QPAS library file	Base

Figure A-1 (Page 7 of 10). IBM Distribution Tape File Names

Tape Filename	Feature ID	Description	Optional Part
5738-CX1 C/400			
Q5738CX1.A00		QCCP install file	Base
Q5738CX1.A01		QCCP library file	Base
Q5738CX1.B00		QCCP install file	1
Q5738CX1.B01		QCCP library file	1
5738-PT1 Performance Tools			
Q5738PT1.A00		QPFR library file	Base
Q5738PT1.A01		QPFR install file	Base
QPT1.L29__.A00		QPFR install file	Base
QPT1.L29__.A01		QPFR library file	Base
5738-CR1 Cryptographic Support			
Q5738CR1.A00		QCRP install file	Base
Q5738CR1.A01		QCRP library file	Base
QCR1.L29__.A00		QCRP install file	Base
QCR1.L29__.A01		QCRP library file	Base
5738-DB1 S/38 Utilities			
Q5738DB1.A00		QIDU install file	Base
Q5738DB1.A01		QIDU library file	Base
QDB1.L29__.A00		QIDU install file	Base
QDB1.L29__.A01		QIDU library file	Base
5738-TC1 TCP/IP Connectivity Utilities			
Q5738TC1.A00		QTCP install file	Base
Q5738TC1.A01		QTCP library file	Base
QTC1.L29__.A00		QTCP install file	Base
QTC1.L29__.A01		QTCP library file	Base

Figure A-1 (Page 8 of 10). IBM Distribution Tape File Names

Tape Filename	Feature ID	Description	Optional Part
5738-CF1 Point-of-Sale Communications Utility			
Q5738CF1.A00		QPOS install file	Base
Q5738CF1.A01		QPOS library file	Base
QCF1.L29__A00		QPOS install file	Base
QCF1.L29__A01		QPOS library file	Base
5738-FNT Advanced Function Printing Fonts			
Q5738FNT.A00		QFNT00 Base install file	Base
Q5738FNT.A01		QFNT00 Base library file	Base
Q5738FNT.B00	5051	QFNT01 Sonoran Serif ¹ install file	1
Q5738FNT.B01	5051	QFNT01 Sonoran Serif library file	1
Q5738FNT.C00	5052	QFNT02 Sonoran Serif Headliner install file	2
Q5738FNT.C01	5052	QFNT02 Sonoran Serif Headliner library file	2
Q5738FNT.D00	5053	QFNT03 Sonoran Sans Serif ² install file	3
Q5738FNT.D01	5053	QFNT03 Sonoran Sans Serif library file	3
Q5738FNT.E00	5054	QFNT04 Sonoran Sans Serif Headliner install file	4
Q5738FNT.E01	5054	QFNT04 Sonoran Sans Serif Headliner library file	4
Q5738FNT.F00	5055	QFNT05 Sonoran Sans Serif Condensed install file	5
Q5738FNT.F01	5055	QFNT05 Sonoran Sans Serif Condensed library file	5
Q5738FNT.G00	5056	QFNT06 Sonoran Sans Serif Expanded install file	6
Q5738FNT.G01	5056	QFNT06 Sonoran Sans Serif Expanded library file	6
Q5738FNT.H00	5057	QFNT07 Monotype Garamond** install file	7
Q5738FNT.H01	5057	QFNT07 Monotype Garamond library file	7
Q5738FNT.I00	5058	QFNT08 Century Schoolbook** install file	8
Q5738FNT.I01	5058	QFNT08 Century Schoolbook library file	8
Q5738FNT.J00	5059	QFNT09 Pi and Specials install file	9
Q5738FNT.J01	5059	QFNT09 Pi and Specials library file	9
Q5738FNT.K00	5060	QFNT10 ITC Souvenir** install file	10
Q5738FNT.K01	5060	QFNT10 ITC Souvenir library file	10
Q5738FNT.L00	5061	QFNT11 ITC Avant Garde Gothic** install file	11
Q5738FNT.L01	5061	QFNT11 ITC Avant Garde Gothic library file	11
Q5738FNT.M00	5062	QFNT12 Math and Science install file	12
Q5738FNT.M01	5062	QFNT12 Math and Science library file	12
Q5738FNT.N00	5063	QFNT13 Data1 install file	13
Q5738FNT.N01	5063	QFNT13 Data1 library file	13
Q5738FNT.O00	5064	QFNT14 APL2 install file	14
Q5738FNT.O01	5064	QFNT14 APL2 library file	14
Q5738FNT.P00	5065	QFNT15 OCRA and OCRB install file	15
Q5738FNT.P01	5065	QFNT15 OCRA and OCRB library file	15
5738-MC1 RM/COBOL-85** for the AS/400 System			
Q5738MC1.A00		QRMC install file	Base
Q5738MC1.A01		QRMC library file	Base

Figure A-1 (Page 9 of 10). IBM Distribution Tape File Names

Tape Filename	Feature ID	Description	Optional Part
QMC1.L29__.A00		QRMC install file	Base
QMC1.L29__.A01		QRMC library file	Base
5738-FT1 FORTRAN/400*			
Q5738FT1.A00		QFTN install file	Base
Q5738FT1.A01		QFTN library file	Base
Q5738FT1.B00		QFTNP install file	1
Q5738FT1.B01		QFTNP library file	1
QFT1.L29__.A00		QFTN install file	Base
QFT1.L29__.A01		QFTN library file	Base
5738-FN1 Advanced Function Printing Fonts (DBCS)			
Q5738FN1.A00		QFNT60 Base install file	Base
Q5738FN1.A01		QFNT60 Base library file	Base
Q5738FN1.B00	5051	QFNT61 Japanese install file	1
Q5738FN1.B01	5051	QFNT61 Japanese library file	1
Q5738FN1.C00	5052	QFNT62 Korean install file	2
Q5738FN1.C01	5052	QFNT62 Korean library file	2
Q5738FN1.D00	5053	QFNT63 Traditional Chinese install file	3
Q5738FN1.D01	5053	QFNT63 Traditional Chinese library file	3
Q5738FN1.E00	5054	QFNT64 Simplified Chinese install file	4
Q5738FN1.E01	5054	QFNT64 Simplified Chinese library file	4
Q5738FN1.F00	5055	QFNT65 Thai install file	5
Q5738FN1.F01	5055	QFNT65 Thai library file	5
5738-SM1 SAA SystemView System Manager/400			
Q5738SM1.A00		QSMU install file	Base
Q5738SM1.A01		QSMU library file	Base
QSM1.L29__.A00		QSMU install file	Base
QSM1.L29__.A01		QSMU library file	Base
5738-OS1 Communications/400			
Q5738OS1.A00		QOSI install file	Base
Q5738OS1.A01		QOSI library file	Base
QOS1.L29__.A00		QOSI install file	Base
QOS1.L29__.A01		QOSI library file	Base

Figure A-1 (Page 10 of 10). IBM Distribution Tape File Names

Tape Filename	Feature ID	Description	Optional Part
5738-AF1 Advanced Function Printing Utilities/400			
Q5738AF1.A00		QAFP install file	Base
Q5738AF1.A01		QAFP library file	Base
QAF1.L29__A00		QAFP install file	Base
QAF1.L29__A01		QAFP library file	Base
<p>¹ Sonoran Serif is a functional equivalent of Monotype Times New Roman.**</p> <p>² Sonoran Sans Serif is a functional equivalent of Monotype Arial.**</p>			

Multilingual or Secondary Language Customer Tape

The following chart shows the sequence of files for a multilingual or secondary language tape.

Figure A-2 (Page 1 of 5). Multilingual or Secondary Language Distribution Tape

Tape Filename	Feature ID	Description	Optional Part
5738-SS1 OS/400 (Part 1)			
QV2R1M0.L29__		Primary language indicator install file	
5738-SS1 OS/400 (Part 2)			
QSS1.L29__A00		QSYS library file	Base
QSS1.L29__A01		QSYS library file	Base
QSS1.L29__A02		QSYS library file	Base
5738-SS1 OS/400 (Part 3)			
QGPL.L29__		QGPL library file	
QUSRSYS.L29__		QUSRSYS library file	
5738-SS1 OS/400 (Part 4)			
QSS1.L29__B00		QGDDM install file	1
QSS1.L29__B01		QGDDM library file	1
QSS1.L29__B02		QQALIB install file	1
QSS1.L29__B03		QQALIB library file	1
QSS1.L29__B04		Folders file	1
QSS1.L29__C00		QHLPSYS install file	2
QSS1.L29__C01		QHLPSYS library file	2
QSS1.L29__D00		QSDE install file	3
QSS1.L29__D01		QSDE library file	3
QSS1.L29__E00		QMGU install file	4
QSS1.L29__E01		QMGU library file	4

Figure A-2 (Page 2 of 5). Multilingual or Secondary Language Distribution Tape

Tape Filename	Feature ID	Description	Optional Part
QSS1.L29___.F00		QSSP install file	5
QSS1.L29___.F01		QSSP library file	5
QSS1.L29___.F02		#DFULIB install file	5
QSS1.L29___.F03		#DFULIB library file	5
QSS1.L29___.F04		#SEULIB install file	5
QSS1.L29___.F05		#SEULIB library file	5
QSS1.L29___.F06		#DSULIB install file	5
QSS1.L29___.F07		#DSULIB library file	5
QSS1.L29___.F08		#SDALIB install file	5
QSS1.L29___.F09		#SDALIB library file	5
QSS1.L29___.F10		#CGULIB install file	5
QSS1.L29___.F11		#CGULIB library file	5
QSS1.L29___.G00		QSYS38 install file	6
QSS1.L29___.G01		QSYS38 library file	6
QSS1.L29___.H00		QUSRTOOL install file	7
QSS1.L29___.H01		QUSRTOOL library file	7
QSS1.L29___.J00		QSYSPRV install file	9
QSS1.L29___.J01		QSYSPRV library file	9
5738-CM1 Communications Utilities			
QCM1.L29___.A00		QRJE install file	Base
QCM1.L29___.A01		QRJE library file	Base
5738-WP1 OfficeVision/400			
QWP1.L29___.A00		QOFC install file	Base
QWP1.L29___.A01		QOFC library file	Base
QWP1.L29___.A02		QDOC folders file	Base
5738-QU1 Query			
QQU1.L29___.A00		QQRYLIB install file	Base
QQU1.L29___.A01		QQRYLIB library file	Base
5738-DS1 BGU			
QDS1.L29___.A00		QBGU install file	Base
QDS1.L29___.A01		QBGU library file	Base
5738-PC1 PC Support			
QPC1.L29___.A00		QIWS install file	Base
QPC1.L29___.A01		QIWS library file	Base
QPC1.L29___.B00		QIWSFS install file	1
QPC1.L29___.B01		QIWSFS library file	1
QPC1.L29___.B02		QDOC folders file	1
QPC1.L29___.C00		QIWSFD install file	2
QPC1.L29___.C01		QIWSFD library file	2
QPC1.L29___.C02		QDOC folders file	2

Figure A-2 (Page 3 of 5). Multilingual or Secondary Language Distribution Tape

Tape Filename	Feature ID	Description	Optional Part
QPC1.L29__.D00		QIWS2S install file	3
QPC1.L29__.D01		QIWS2S library file	3
QPC1.L29__.D02		QDOC folders file	3
QPC1.L29__.E00		QIWS2D install file	4
QPC1.L29__.E01		QIWS2D library file	4
QPC1.L29__.E02		QDOC folders file	4
QPC1.L29__.F00		QIWS2S install file	5
QPC1.L29__.F01		QIWS2S library file	5
QPC1.L29__.F02		QDOC folders file	5
QPC1.L29__.G00		QIWSFD install file	6
QPC1.L29__.G01		QIWSFD library file	6
QPC1.L29__.G02		QDOC folders file	6
5738-PW1 Application Development Tools			
QPW1.L29__.A00		QPDA install file	Base
QPW1.L29__.A01		QPDA library file	Base
5738-PW1 Advanced DBCS Printer Support			
QAP1.L29__.A00		QAPS install file	Base
QAP1.L29__.A01		QAPS library file	Base
5738-ST1 SQL/400*			
QST1.L29__.A00		QSQL install file	Base
QST1.L29__.A01		QSQL library file	Base
5738-RG1 RPG/400			
QRG1.L29__.A00		QRPG install file	Base
QRG1.L29__.A01		QRPG library file	Base
QRG1.L29__.B00		#RPGLIB install file	1
QRG1.L29__.B01		#RPGLIB library file	1
QRG1.L29__.C00		QRPG38 install file	2
QRG1.L29__.C01		QRPG38 library file	2
5738-CB1 COBOL/400*			
QCB1.L29__.A00		QLBL install file	Base
QCB1.L29__.A01		QLBL library file	Base
QCB1.L29__.B00		#COBLIB install file	1
QCB1.L29__.B01		#COBLIB library file	1
QCB1.L29__.C00		QCBL install file	2
QCB1.L29__.C01		QCBL library file	2
5738-BA1 BASIC			
QBA1.L29__.A00		QBAS install file	Base
QBA1.L29__.A01		QBAS library file	Base
5738-PL1 PL/I			
QPL1.L29__.A00		QPLI install file	Base
QPL1.L29__.A01		QPLI library file	Base

Figure A-2 (Page 4 of 5). Multilingual or Secondary Language Distribution Tape

Tape Filename	Feature ID	Description	Optional Part
<p>Note: These files are included on multilingual or secondary language distribution tapes only when one of the following secondary National Language Version (NLV) feature codes is ordered. All these NLV feature codes are DBCS languages.</p>			
5938		English Uppercase DBCS	
5962		Japanese Kanji DBCS	
5984		English U/L Case DBCS	
5986		Korean Hangeul DBCS	
5987		Chinese, Traditional DBCS	
5989		Chinese, Simplified (PRC) DBCS	
5738-PS1 Pascal			
QPS1.L29__.A00		QPAS install file	Base
QPS1.L29__.A01		QPAS library file	Base
5738-CX1 C/400*			
QCX1.L29__.A00		QCCP install file	Base
QCX1.L29__.A01		QCCP library file	Base
QCX1.L29__.B00		QCCP install file	1
QCX1.L29__.B01		QCCP library file	1
5738-PT1 Performance Tools			
QPT1.L29__.A00		QPFR install file	Base
QPT1.L29__.A01		QPFR library file	Base
5738-CR1 Cryptographic Support			
QCR1.L29__.A00		QCRP install file	Base
QCR1.L29__.A01		QCRP library file	Base
5738-DB1 S/38 Utilities			
QDB1.L29__.A00		QIDU install file	Base
QDB1.L29__.A01		QIDU library file	Base
5738-TC1 TCP/IP Connectivity Utilities			
QTC1.L29__.A00		QTCP install file	Base
QTC1.L29__.A01		QTCP library file	Base
5738-CF1 Point-of-Sale Communications Utility			
QCF1.L29__.A00		QPOS install file	Base
QCF1.L29__.A01		QPOS library file	Base
5738-MC1 RM/COBOL-85 for the AS/400 System			
QMC1.L29__.A00		QRMC install file	Base
QMC1.L29__.A01		QRMC library file	Base

Figure A-2 (Page 5 of 5). Multilingual or Secondary Language Distribution Tape

Tape Filename	Feature ID	Description	Optional Part
5738-FT1 FORTRAN/400			
QFT1.L29__.A00		QFTN install file	Base
QFT1.L29__.A01		QFTN library file	Base
5738-SM1 SAA SystemView System Manager/400			
QSM1.L29__.A00		QSMU install file	Base
QSM1.L29__.A01		QSMU library file	Base
5738-OS1 Communications/400			
QOS1.L29__.A00		QOSI install file	Base
QOS1.L29__.A01		QOSI library file	Base
5738-AF1 Advanced Function Printing Utilities/400			
QAF1.L29__.A00		QAFP install file	Base
QAF1.L29__.A01		QAFP library file	Base

Appendix B. Central Site Distribution Cover Sheet

Install the distribution tape using the *Licensed Programs and New Release Installation Guide*, SC41-9878, or the *Automatic Installation Guide*, SX41-9072.

The central site system must provide instructions to the target site systems on installing user libraries and applications.

You can copy the cover sheet in this appendix to include with your distribution tape.

For automatic installation, use the following instructions to install the distribution tape:	For manual installation, use the following instructions to install the distribution tape:
Part 2, "Replacing a Release Using Automatic Installation" of the <i>Licensed Programs and New Release Installation Guide</i> , SC41-9878, or , <i>Automatic Installation Guide</i> , SX41-9072	Part 3, "Replacing a Release Using Manual Installation" of the <i>Licensed Programs and New Release Installation Guide</i> , SC41-9878, or , <i>Automatic Installation Guide</i> , SX41-9072

You should include a listing from the Display Tape (DSPTAP) command with the distribution tapes you send to the target site system. The listing can be used at the target site system to locate a specific licensed program on the tapes.

Central Site Distribution Cover Sheet

Central Site Identification _____

Target Site Identification _____

Version ____ Release ____ Modification _____

Contents of Tape:

IBM Licensed Internal Code
IBM OS/400 Licensed Program

Install the distribution tape one of the following sets of instructions.

Place an X by the appropriate information:

- Version 2.0 Automatic Installation Guide, SX41-9072 (for automatic installation)*
- Part 2. Replacing a Release Using Automatic Installation in the *Licensed Programs and New Release Installation Guide SC41-9878.***
- Part 3. Replacing a Release Using Manual Installation in the *Licensed Programs and New Release Installation Guide SC41-9878.***

Special Instructions:

You may copy as necessary.

RV20627-0

Index

A

- attended target site systems 2-14
- automatic configuration 2-7
- automatic installation 1-4

C

- central site distribution cover sheet B-1
- central site system
 - description 1-1
- central site system distribution of fixes 2-9
- changing an installation profile 4-3
- commands
 - CPYDSTTAP 2-3
 - DUPTAP 2-3
- compaction, data
 - see *Backup and Recovery Guide*, SC41-8079 5-4
- compression, data
 - see *Backup and Recovery Guide*, SC41-8079 5-4
- copy distribution tape (CPYDSTTAP) command
 - preparing distribution media 2-3
- copy the IBM licensed program distribution tape 1-4
- creating an installation profile 4-3

D

- data compaction
 - see *Backup and Recovery Guide*, SC41-8079 5-4
- data compression
 - see *Backup and Recovery Guide*, SC41-8079 5-4
- distribution methods 1-2
- distribution tape
 - copying 2-3
 - preparing 5-2
 - preparing illustration 5-2
- document objects
 - restoring for secondary languages 5-8
- documentation for target site system 2-4
- double-byte character set
 - distributing as secondary language 2-5
- duplicate save tape (DUPTAP) command
 - preparing distribution media 2-3
 - save library (SAVLIB) command 2-4

E

- electronic customer support considerations 2-14

F

- folder objects
 - restoring for secondary languages 5-8

I

- IBM-supplied libraries (QGPL, QUSRSYS) 2-7
- information for target site system 2-4
- initial distribution 2-6
- install the IBM licensed program distribution tape at the central site system 1-3
- installation methods 1-4
- installation profile
 - advantages of using an installation profile 4-1
 - changing 4-3
 - creating 4-3
 - work with installation profiles display 4-1
- installation profiles
 - changing an installation profile 4-3
 - creating an installation profile 4-3
 - deleting an installation profile 4-12
 - displaying an installation profile 4-11
- installing a new AS/400 system
 - licensed internal code 2-4
- installing additional licensed programs 5-8
- installing applications and restoring objects using a user-defined installation program 3-1
- installing secondary languages 5-8
- installing the distribution tape at the target site system 5-5
 - additional licensed programs 5-8
 - installing secondary languages 5-8
 - installing user libraries 5-8
 - restoring user profiles and configuration objects (optional) 5-8
- installing user libraries 5-8

L

- language files
 - primary language files 2-5
 - secondary language files 2-5
- libraries
 - IBM-supplied libraries (QGPL, QUSRSYS) 2-7
 - other user libraries 2-7
- licensed program file names A-1

M

- manual installation 1-5
- manuals for target site system 2-4
- multilingual tape
 - sequence of files A-10

N

- new release distribution, using user profiles 2-6
- new release installation 2-7

O

other user libraries 2-8

P

planning licensed program distributions

- central site system distribution of fixes 2-9
- electronic customer support considerations 2-14
- installing a new AS/400 system 2-4
- language files 2-5
- libraries 2-7
- manuals for target site system 2-4
- optional OS/400 items and other licensed programs 2-8
- OS/400 licensed program 2-5
- PC Support 2-9
- preparing distribution tapes and installation instructions 2-1
- program temporary fixes (PTFs) 2-9
- rack or system configuration data 2-13
- save and restore strategy 2-14
- user profiles and device configuration 2-5
- using device configuration
 - automatic configuration 2-6
 - initial distribution 2-6
 - new release installation 2-6
 - preloaded target site systems 2-6
 - total system package 2-6

preloaded system option 1-6

preparing and installing distribution tapes

- installing the distribution tape at the target site system 5-5
- preparing the distribution tape 5-2

preparing distribution tapes and installation instructions

- copy the IBM licensed program distribution tape 2-3
- preparing distribution tapes and installation instructions 2-3

preparing the distribution tape 5-2

primary language files 2-5

program temporary fix (PTF) level 1-6

program temporary fixes (PTFs)

- displaying PTF status 2-9
- PTF and licensed internal code fix management at the central site 2-9

Q

QLPUSER program 3-1

R

rack configuration

- data 2-13
- saving on tape 5-5

rack or system configuration data 2-13

release level compatibility 1-6

restore library (RSTLIB) command 2-4

restoring user profiles and configuration objects (optional) 5-8

S

save and restore strategy

- attended target site systems 2-14
- unattended systems in a communications network 2-14

save library (SAVLIB) command

- duplicate save tape (DUPTAP) command 2-4
- restore library (RSTLIB) command 2-4

save tape

- duplicating 2-3

secondary language files 2-5

secondary language tape

- sequence of files A-10

T

target site system

- description 1-1
- manuals for 2-4

things to do before you create a distribution tape with LICPGM menu option 40 5-1

total system package option 1-6

U

unattended systems in a communications network 2-14

user profiles and device configuration

- using device configuration 2-6
- using user profiles 2-5

using the QLPUSER program 3-1

using user profiles

- initial distribution 2-6
- new release distribution 2-6

V

verifying the operation of the QLPUSER program 3-2

Reader's Comments

**Application System/400™
Central Site
Distribution Guide
Version 2
Publication No. SC41-9993-00**

Use this form to tell us what you think about this manual. If you have found errors in it, or if you want to express your opinion about it (such as organization, subject matter, appearance) or make suggestions for improvement, this is the form to use.

To request additional publications, or to ask questions or make comments about the functions of IBM products or systems, you should talk to your IBM representative or to your IBM authorized remarketer. This form is provided for comments about the information in this manual and the way it is presented.

When you send comments to IBM, you grant IBM a nonexclusive right to use or distribute your comments in any way it believes appropriate without incurring any obligation to you.

Be sure to print your name and address below if you would like a reply.

Ruled lines for writing comments.

Name _____

Address _____

Company or Organization _____

Phone No. _____



Fold and Tape

Please do not staple

Fold and Tape



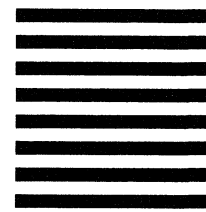
NO POSTAGE
NECESSARY
IF MAILED IN THE
UNITED STATES

BUSINESS REPLY MAIL

FIRST CLASS MAIL PERMIT NO. 40 ARMONK, NEW YORK

POSTAGE WILL BE PAID BY ADDRESSEE

ATTN DEPT 245
IBM CORPORATION
3605 HWY 52 N
ROCHESTER MN 55901-7899



Fold and Tape

Please do not staple

Fold and Tape



Program Number: 5738-SS1

Printed in Denmark by Bonde's

SC41-9993-00

